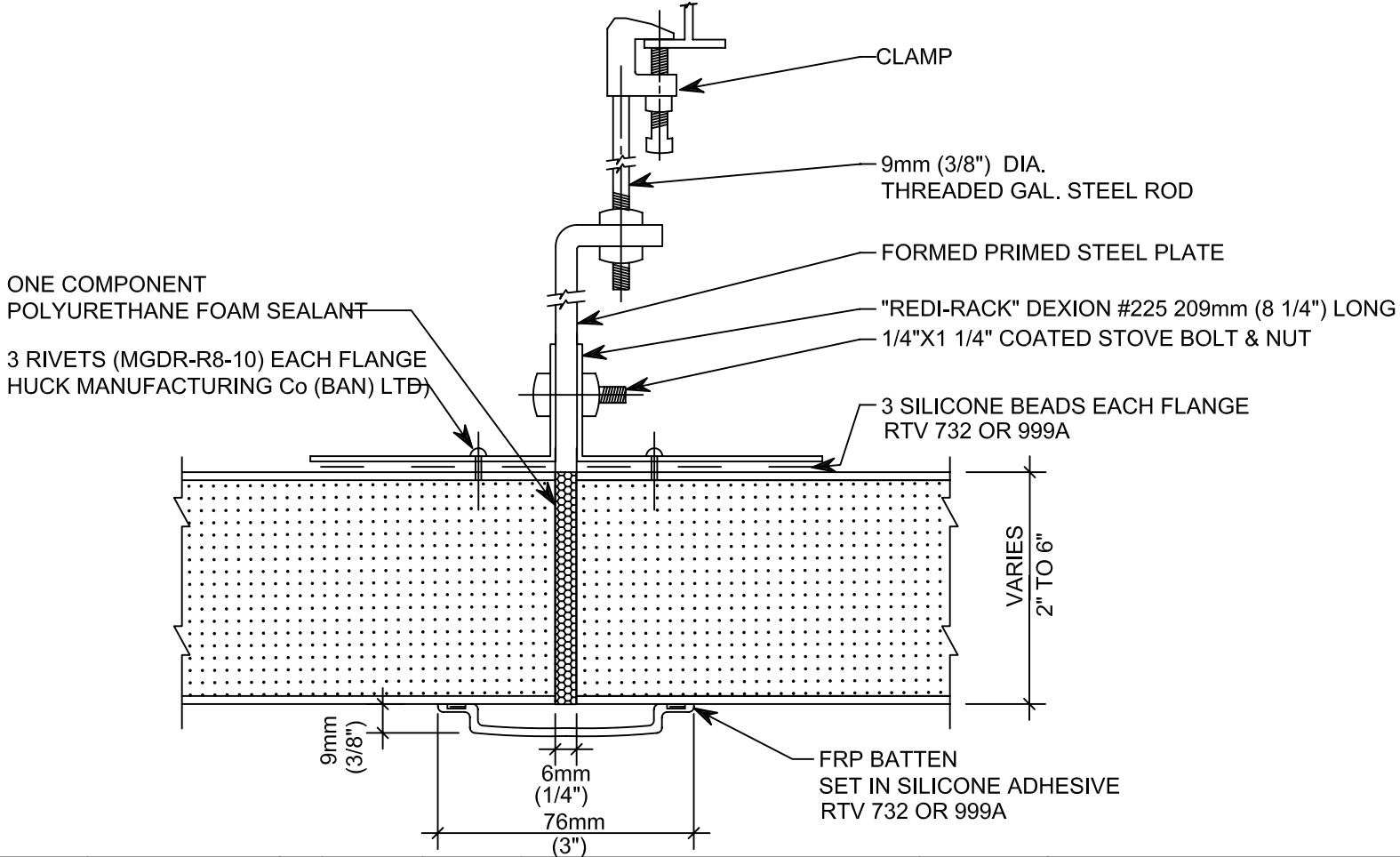


<b>NOTE:</b>	<b>PANEL DIMENSIONS</b>		<b>SURFACE FINISH</b>
SEE INFORMATION ON MAXIMUM RECOMMENDED SPAN "L" FOR DISTRIBUTED AND CONCENTRATED LOADS	<input type="checkbox"/> MIN. 8'x8' <input type="checkbox"/> MAX. 10'x50'		USDA/ANTIMICROBIAL GEL COAT



	DWG # <b>CE-21</b>	F				DATE 2-11-02	 <b>arcoplast</b> WALL AND CEILING SYSTEMS 1873 WILLIAMSTOWN DR. ST. PETERS, MO 63376 888-736-2726 FAX 636-978-7782
YIELD		E				SCALE N.T.S.	
		D				DRAWN BY JGB	
		C				CHECKED BY G.B.	
		B				SUSPENDED CEILING: CONCEALED HANGER (TYPICAL PANEL JOINTS)	
		A					
		NO.	DATE	E.C.N.	REVISIONS		