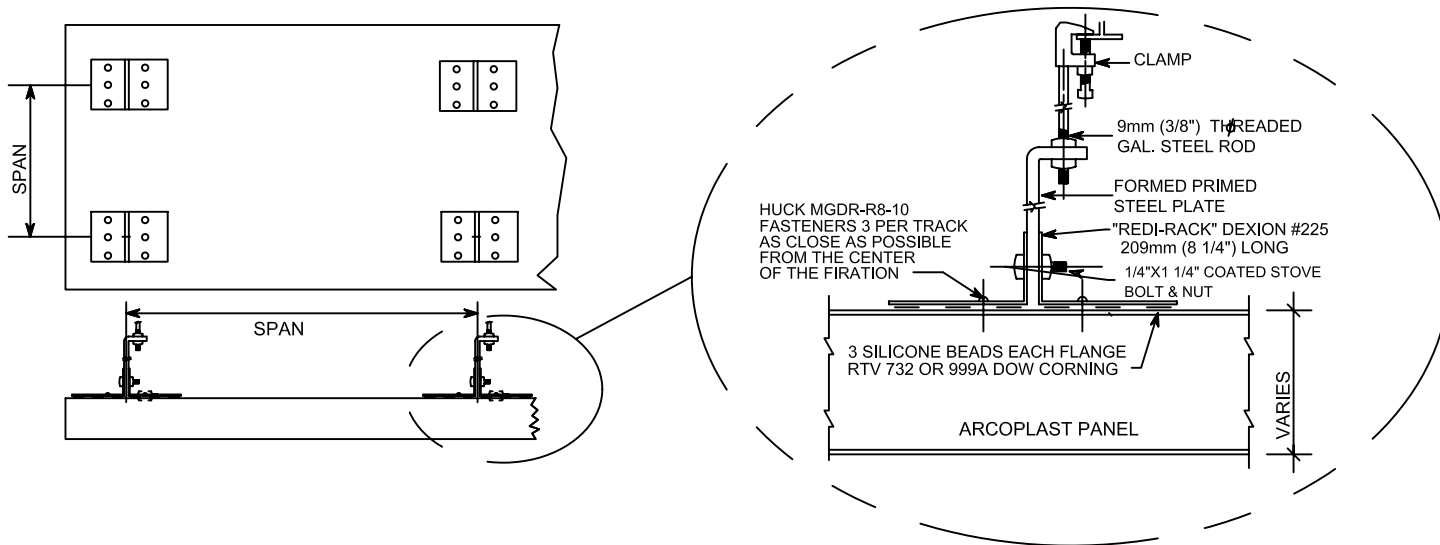
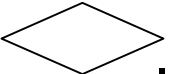


NORMAL THICKNESS (IN.)	NOTE	DISTRIBUTED LOAD (10 lb/ft)	NOTE	CONCENTRATED LOADS
		MAXIMUM RECOMMENDED SPAN (SAFETY FACTOR 1.5)		MAXIMUM RECOMMENDED SPAN (SAFETY FACTOR 1.5)
2"	B, F	6'	B,D,F	5'
3"	B, F	8'	B,D,F	8'



YIELD	DWG #	F				DATE	 arcoplast WALL AND CEILING SYSTEMS	1873 WILLIAMSTOWN DR. ST. PETERS, MO 63376 888-736-2726 FAX 636-978-7782
	CE-21A	E				2-11-02		
		D				SCALE		
		C				N.T.S.		
		B				DRAWN BY		
		A				JGB		
		NO.	DATE	E.C.N.	REVISIONS	CHECKED BY		
						G.B.		CONCEALED HANGER SUPPORTED CEILING APPLICATION