

# ARCOPLAST LAY-IN CEILING PANELS

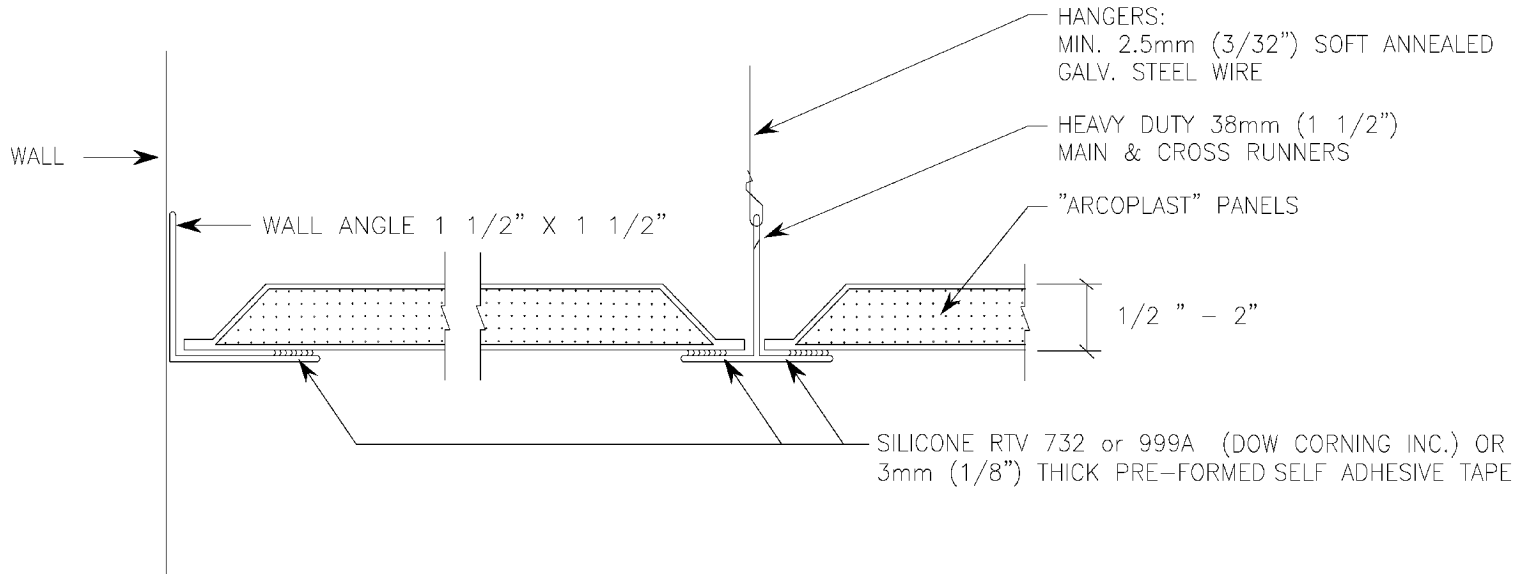
- \* POLYISOCYANURATE FOAM CORE
- \* GELL COATED CLOSED EDGE TILE

# CEILING TILE DIMENSIONS

- 2'X2'
- 2'X4'
- 4'X4'

# T - OPTIONS

- COLD ROLLED GALVANIZED METAL 1" Face
- COLD ROLLED ALUMINIUM 1" Face
- COLD ROLLED STAINLESS 1" Face
- EXTRUDED ALUMINIUM 1 1/2" Face



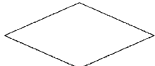
YIELD	DWG #	F			
	CE-11	E			
		D			
		C			
		B			
	A				
	NO.	DATE	E.C.N.	REVISIONS	

DATE:  
2-11-02

SCALE:  
N.T.S.

DRAWN:  
JGB

CHECKED:  
G.B.



**arcoplast**

WALL AND CEILING SYSTEMS

858 WOODCOVE COURT  
CHESTERFIELD, MO 63017  
888-736-2726  
FAX 314-530-9949

CLOSED EDGE TILE  
SUSPENDED CEILING  
INVERTED T RUNNERS (TYPICAL JOINT)

# ARCOPLAST LAY-IN CEILING PANELS

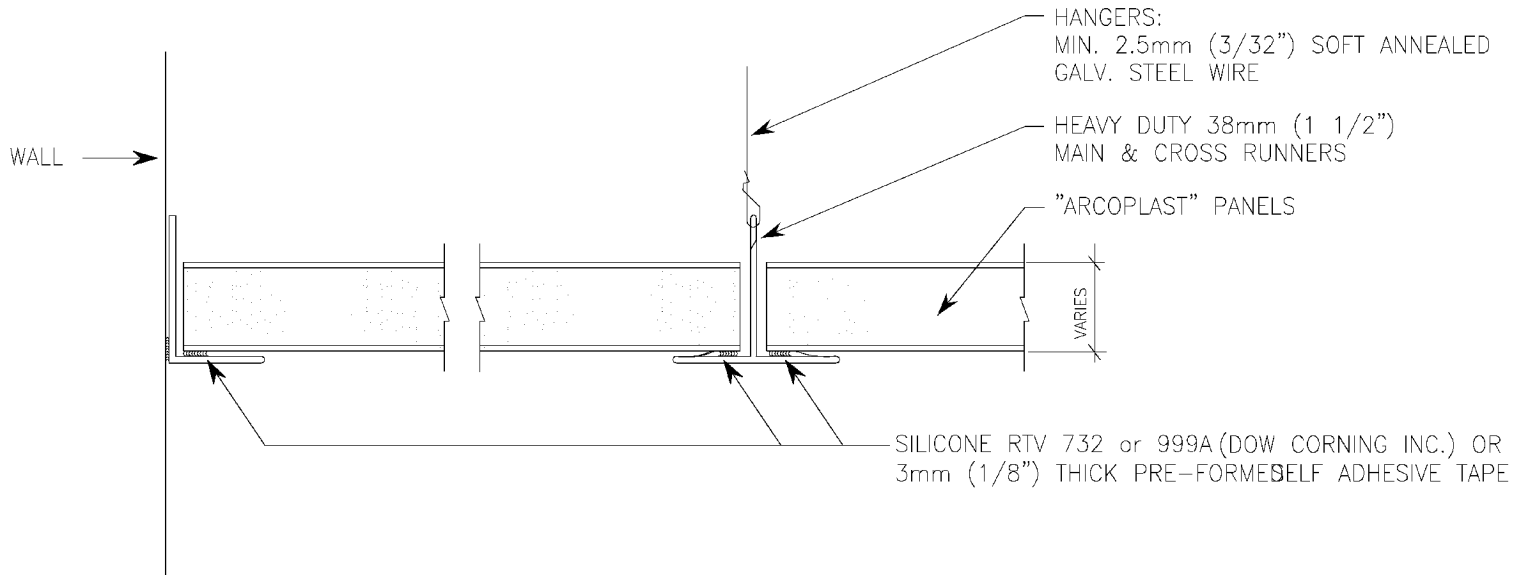
- \* POLYISOCYANURATE FOAM CORE
  - \* EXPANDED POLYSTYRENE FOAM
  - \* SOLID CORE
  - \* NON-GEL COATED FRP
- CLASS A & CLASS C SURFACES AVAILABLE


# CEILING TILE DIMENSIONS

- 2'X2'
- 2'X4'
- 4'X4'

# T - OPTIONS

- COLD ROLLED GALVANIZED METAL 1" Face
- COLD ROLLED ALUMINIUM 1" Face
- COLD ROLLED STAINLESS 1" Face
- EXTRUDED ALUMINIUM 1 1/2" Face



YIELD	DWG #	F			DATE:	 <p><b>WALL AND CEILING SYSTEMS</b></p>	858 WOODCOVE COURT CHESTERFIELD, MO 63017 888-736-2726 FAX 314-530-9949
	CE-12	E			2-11-02		
		D			SCALE:		
		C			N.T.S.		
		B			DRAWN:		
	A			JGB	CHECKED:	CLOSED EDGE TILE SUSPENDED CEILING INVERTED T RUNNERS (TYPICAL JOINTS)	
	NO.	DATE	E.C.N.	REVISIONS	G.B.		

# ARCOPLAST CONCEALED HANGER SYSTEM

## RECOMMENDED PANEL DIMENSIONS

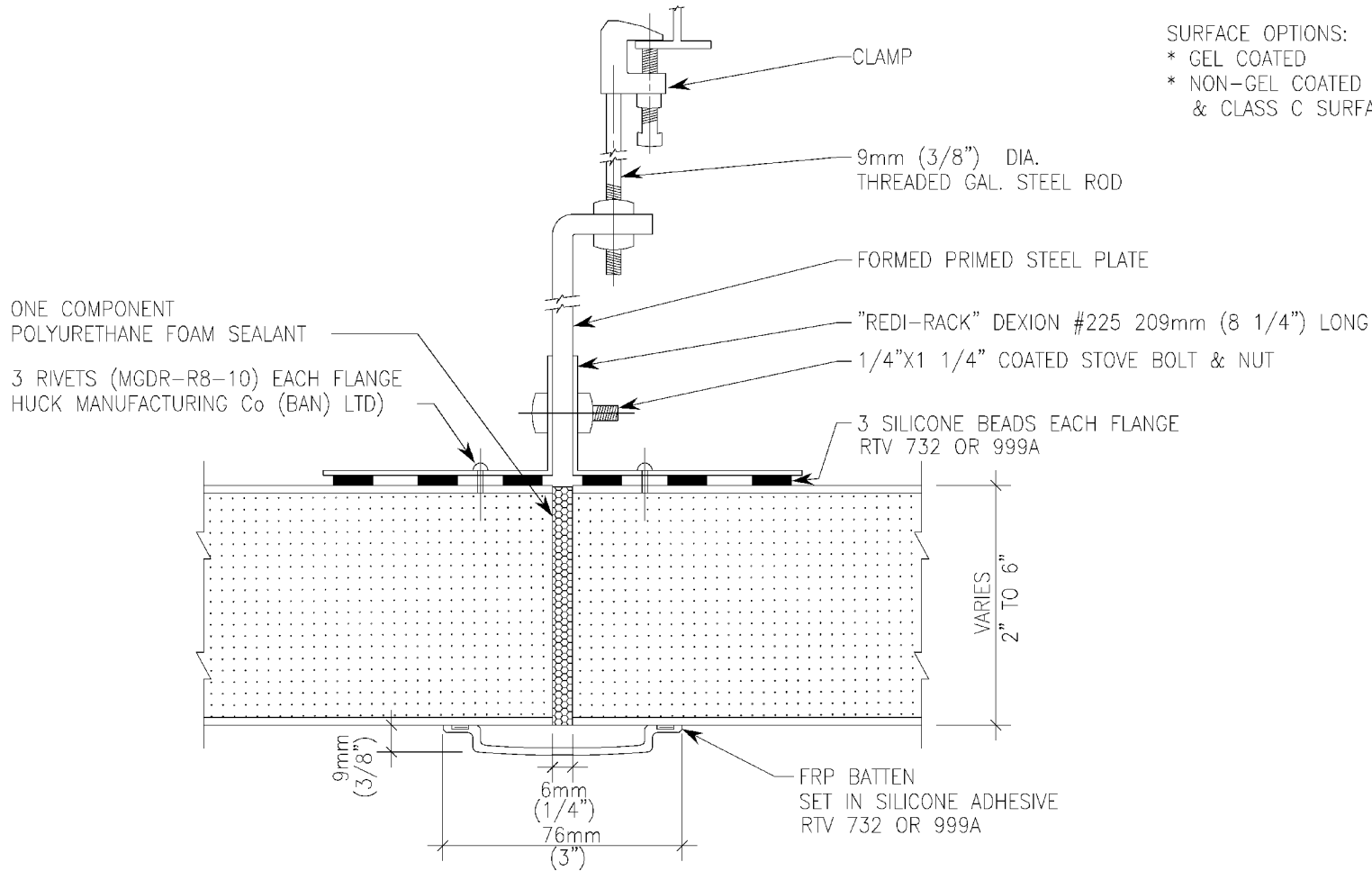
- MIN. 8'x 8'
- MAX. 8'x 50'


## NOTE:

SEE INFORMATION ON MAXIMUM RECOMMENDED SPAN "L" FOR DISTRIBUTED AND CONCENTRATED LOADS.

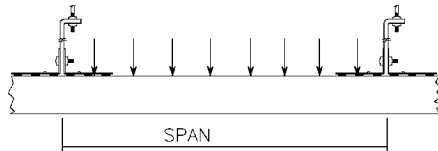
## SURFACE OPTIONS:

- \* GEL COATED
- \* NON-GEL COATED FRP - CLASS A & CLASS C SURFACES AVAILABLE.

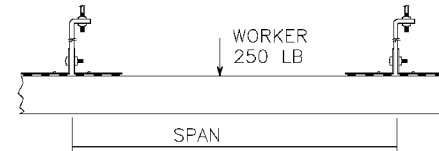


YIELD	DWG #	F			DATE:		858 WOODCOVE COURT CHESTERFIELD, MO 63017 888-736-2726 FAX 314-530-9949
	CE-21	E			2-11-02		
		D			SCALE:	<b>WALL AND CEILING SYSTEMS</b>	SUSPENDED CEILING: CONCEALED HANGER (TYPICAL PANEL JOINTS)
		C			N.T.S.		
		B			DRAWN:		
		A			JGB		
		NO.	DATE	E.C.N.	REVISIONS	CHECKED:	
						G.B.	

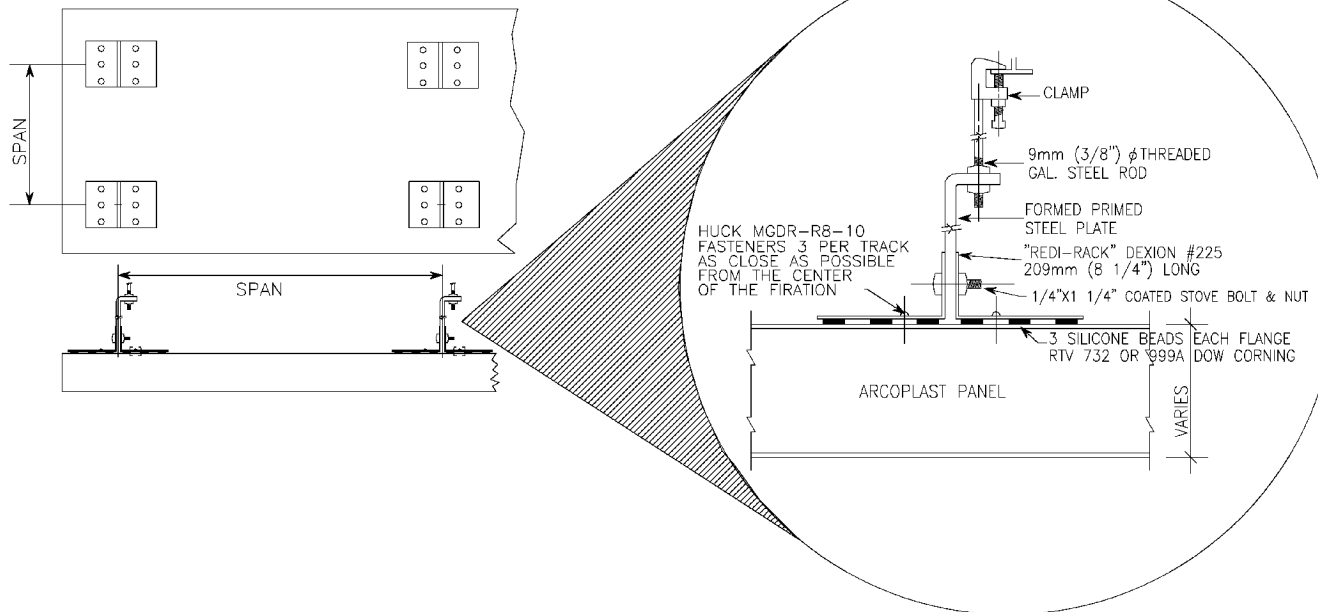
DISTRIBUTED LOAD (10 lb/ft )<sup>2</sup>



CONCENTRATED LOADS



NORMAL THICKNESS (IN.)	DISTRIBUTED LOAD (10 lb/ft ) <sup>2</sup>		CONCENTRATED LOADS	
	NOTE	MAXIMUM RECOMMENDED SPAN (SAFETY FACTOR 1.5)	NOTE	MAXIMUM RECOMMENDED SPAN (SAFETY FACTOR 1.5)
2"	B, F	6'	B,D,F	5'
3"	B, F	8'	B,D,F	8'




YIELD	DWG #	F			
	CE-21A	E			
		D			
		C			
		B			
	A				
	NO.	DATE	E.C.N.	REVISIONS	

DATE:  
2-11-02

SCALE:  
N.T.S.

DRAWN:  
JGB

CHECKED:  
G.B.



**arcoplast**

WALL AND CEILING SYSTEMS

858 WOODCOVE COURT  
CHESTERFIELD, MO 63017  
888-736-2726  
FAX 314-530-9949

CONCEALED HANGER  
SUPPORTED CEILING APPLICATION

# ARCOPLAST CONCEALED HANGER SYSTEM

## RECOMMENDED PANEL DIMENSIONS

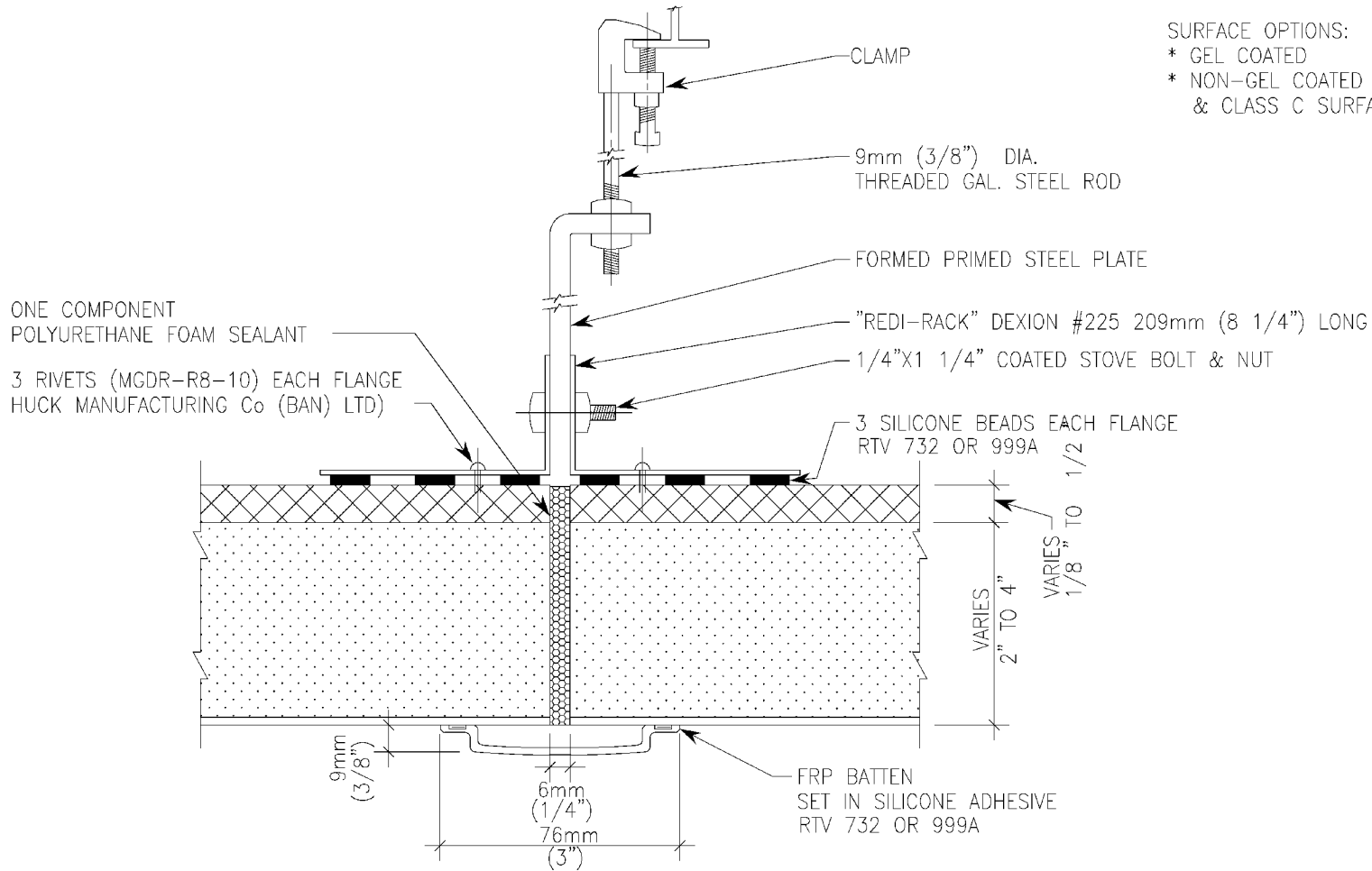
- MIN. 8'x 8'
- MAX. 8'x 50'

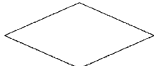
## NOTE:

SEE INFORMATION ON MAXIMUM  
RECOMMENDED SPAN "L" FOR  
DISTRIBUTED AND CONCENTRATED LOADS.

## SURFACE OPTIONS:

- \* GEL COATED
- \* NON-GEL COATED FRP - CLASS A  
& CLASS C SURFACES AVAILABLE.



YIELD	DWG #	F			DATE:	 <b>arcoplast</b> WALL AND CEILING SYSTEMS	858 WOODCOVE COURT CHESTERFIELD, MO 63017 888-736-2726 FAX 314-530-9949
	CE-22	E			2-11-02		
		D			SCALE:		
		C			N.T.S.		
		B			DRAWN:		
	A			JGB	CHECKED:	SUSPENDED CEILING: CONCEALED HANGER (TYPICAL PANEL JOINTS)	
	NO.	DATE	E.C.N.	REVISIONS	G.B.		

# ARCOPLAST CONCEALED HANGER SYSTEM

## RECOMMENDED PANEL DIMENSIONS

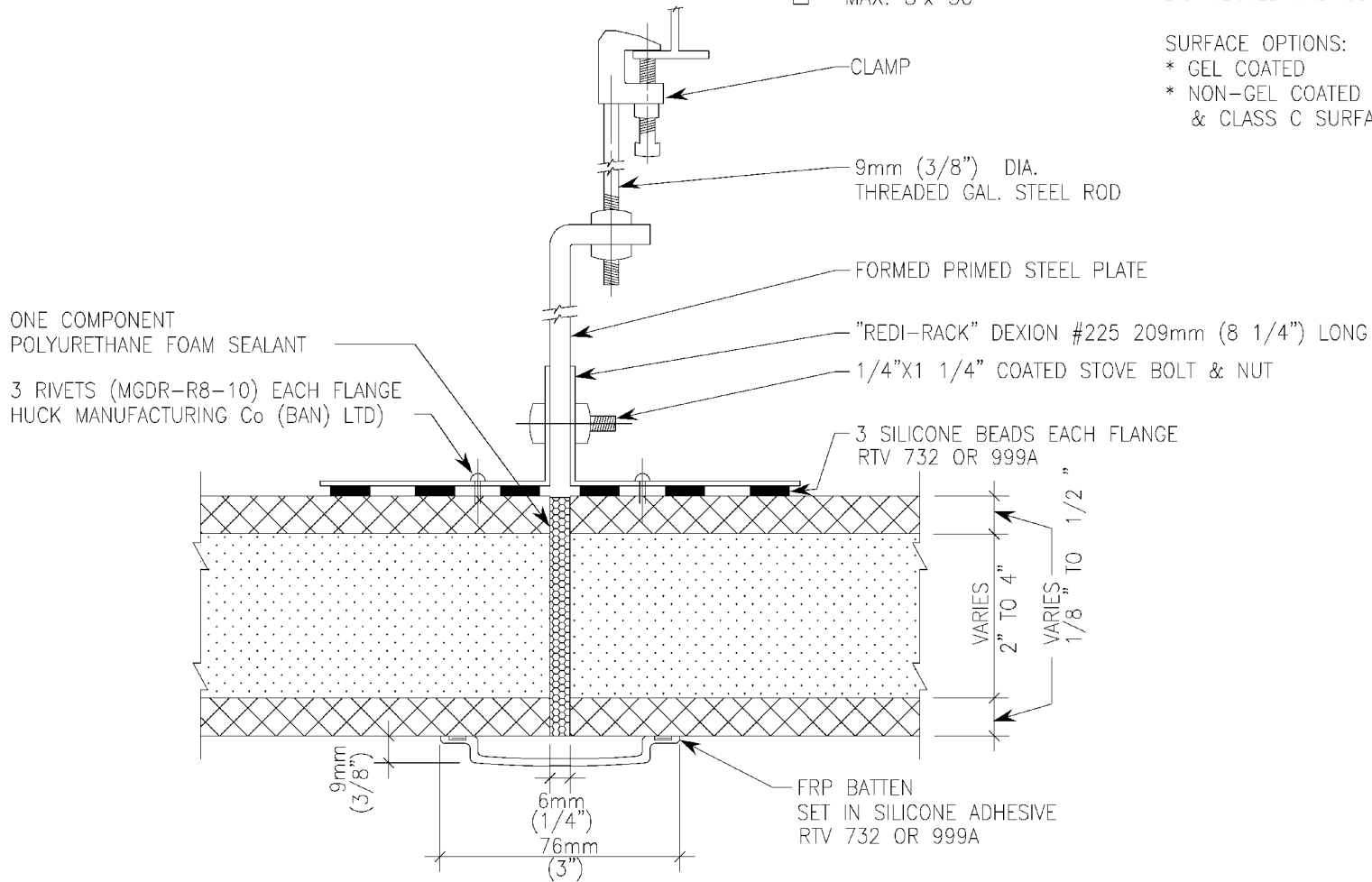
- MIN. 8'x 8'
- MAX. 8'x 50'

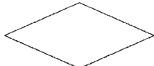
## NOTE:

SEE INFORMATION ON MAXIMUM  
RECOMMENDED SPAN "L" FOR  
DISTRIBUTED AND CONCENTRATED LOADS.

## SURFACE OPTIONS:

- \* GEL COATED
- \* NON-GEL COATED FRP - CLASS A  
& CLASS C SURFACES AVAILABLE.



YIELD	DWG #	F			DATE:	 <b>arcoplast</b> WALL AND CEILING SYSTEMS	858 WOODCOVE COURT CHESTERFIELD, MO 63017 888-736-2726 FAX 314-530-9949
	CE-23	E			2-11-02		
		D			SCALE:		
		C			N.T.S.		
		B			DRAWN:		
		A			JGB		
		NO.	DATE	E.C.N.	REVISIONS	CHECKED:	
						G.B.	SUSPENDED CEILING: CONCEALED HANGER (TYPICAL PANEL JOINTS)

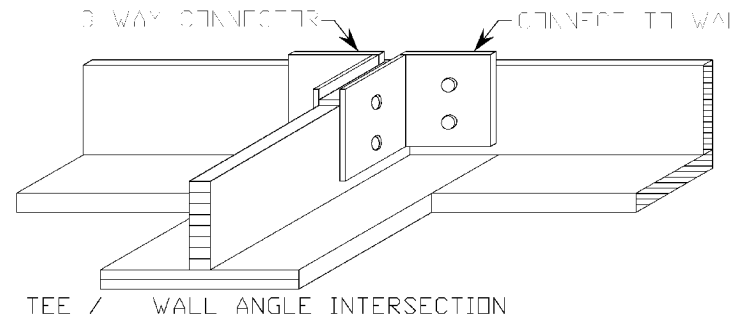
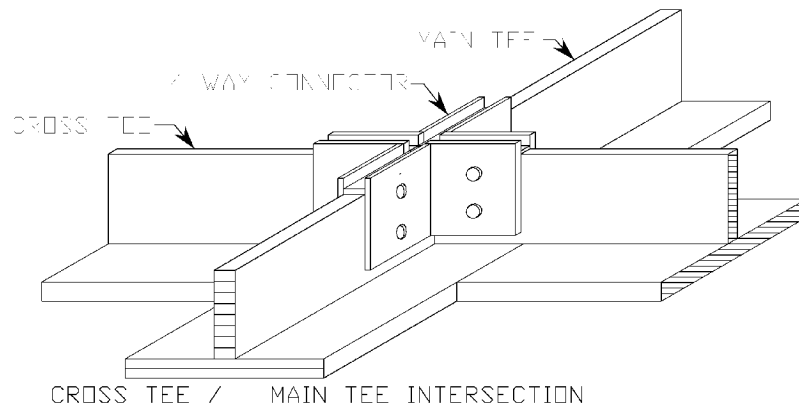
HEAVY DUTY INVERTED "T"  
ATTACHMENT SYSTEM

RECOMMENDED  
PANEL DIMENSIONS

- MIN. 8'x 8'
- MAX. 8'x 50'

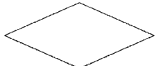
GRID

6" PULTRUDED HEAVY DUTY  
PULTRUDED GRID



YIELD	DWG #	F			
	CE-30	E			
		D			
		C			
		B			
	A				
	NO.	DATE	E.C.N.	REVISIONS	

DATE:	2-11-02
SCALE:	N.T.S.
DRAWN:	JGB
CHECKED:	G.B.



**arcoplast**  
WALL AND CEILING SYSTEMS

858 WOODCOVE COURT  
CHESTERFIELD, MO 63017  
888-736-2726  
FAX 314-530-9949

**HEAVY DUTY SUSPENDED CEILING:  
INVERTED T RUNNERS (TYPICAL JOINTS)**

# ARCOPLAST INSULATED CEILING PANEL

## CORE OPTIONS:

- \* POLYISOCYANURATE FOAM
- \* EXPANDED POLYSTYRENE FOAM

## RECOMMENDED PANEL DIMENSIONS

- MIN. 8'x 8'
- MAX. 8'x 50'

## NOTE:

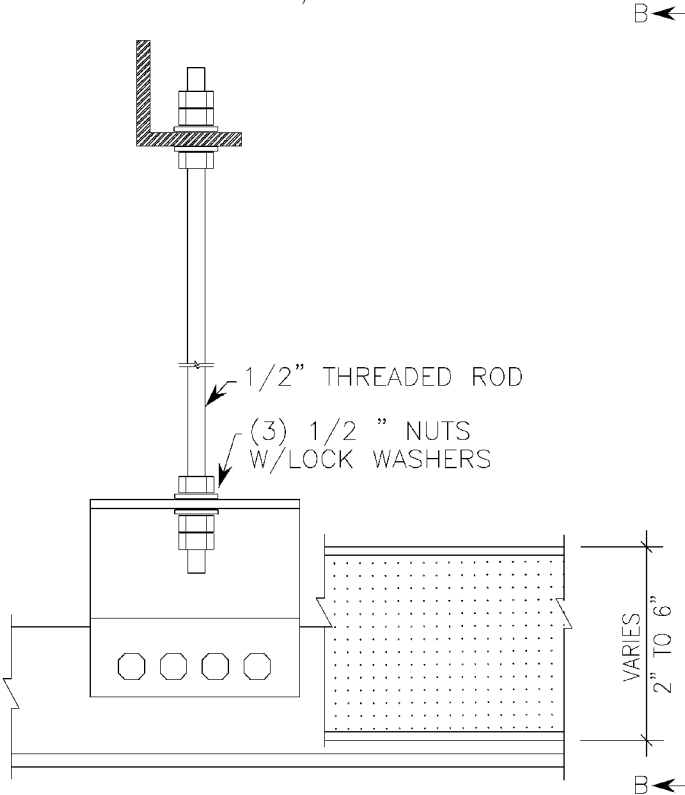
### SURFACE OPTIONS:

- \* GEL COATED
- \* NON-GEL COATED FRP - CLASS A & CLASS C SURFACES AVAILABLE.

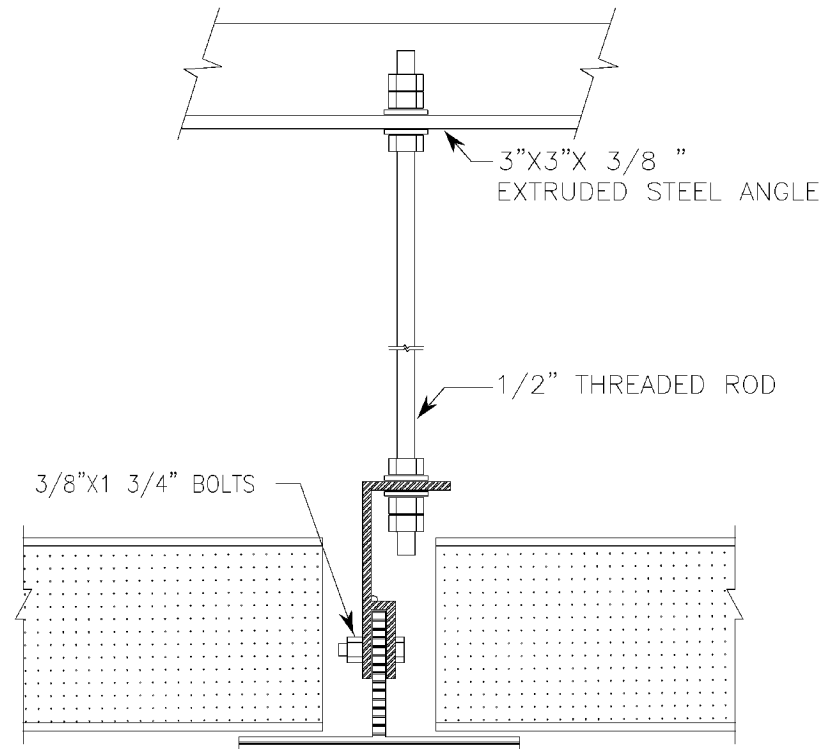
### GRID OPTIONS:

- 6" PULTRUDED

MAIN TEE BRACKET W/THREADED ROD



SECTION-B MAIN TEE BRACKET



YIELD	DWG #	F			
	CE-31	E			
		D			
		C			
		B			
	A				
	NO.	DATE	E.C.N.	REVISIONS	

DATE:  
2-11-02

SCALE:  
N.T.S.

DRAWN:  
JGB

CHECKED:  
G.B.

  
**arcoplast**  
WALL AND CEILING SYSTEMS

858 WOODCOVE COURT  
CHESTERFIELD, MO 63017  
888-736-2726  
FAX 314-530-9949

SUSPENDED CEILING  
INVERTED T RUNNERS (TYPICAL JOINTS)



# ARCOPLAST INSULATED CEILING PANEL

## CORE OPTIONS:

- \* POLYISOCYANURATE FOAM
- \* EXPANDED POLYSTYRENE FOAM

## RECOMMENDED PANEL DIMENSIONS

- MIN. 8'x 8'
- MAX. 8'x 35'

## NOTE:

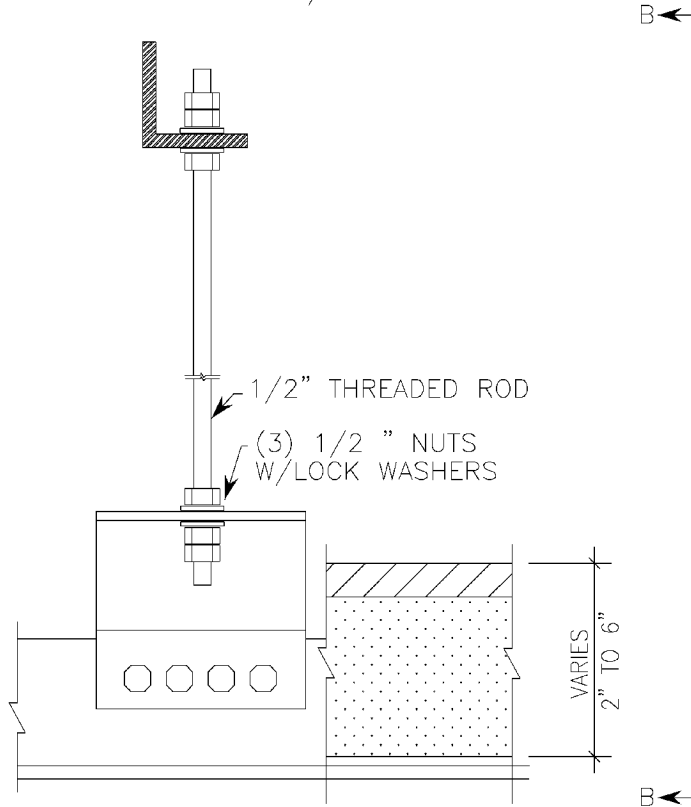
### SURFACE OPTIONS:

- \* GEL COATED
- \* NON-GEL COATED FRP - CLASS A & CLASS C SURFACES AVAILABLE.

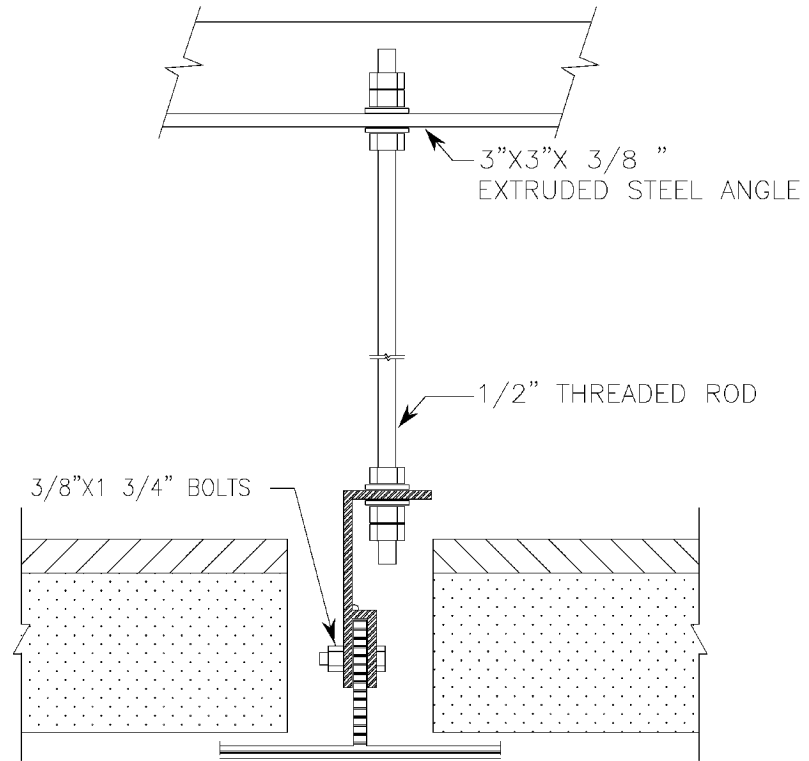
### GRID OPTIONS:

- 6" PULTRUDED

MAIN TEE BRACKET W/THREADED ROD



SECTION-B MAIN TEE BRACKET



YIELD	DWG #	F				
	CE-32	E				
		D				
		C				
		B				
	A					
	NO.	DATE	E.C.N.	REVISIONS		

DATE:	2-11-02
SCALE:	N.T.S.
DRAWN:	JGB
CHECKED:	G.B.

**WALL AND CEILING SYSTEMS**

858 WOODCOVE COURT  
 CHESTERFIELD, MO 63017  
 888-736-2726  
 FAX 314-530-9949

**SUSPENDED CEILING:  
 INVERTED T RUNNERS (TYPICAL JOINTS)**

# ARCOPLAST INSULATED CEILING PANEL

## CORE OPTIONS:

- \* POLYISOCYANURATE FOAM
- \* EXPANDED POLYSTYRENE FOAM

## RECOMMENDED PANEL DIMENSIONS

- MIN. 8'x 8'
- MAX. 8'x 35'

## NOTE:

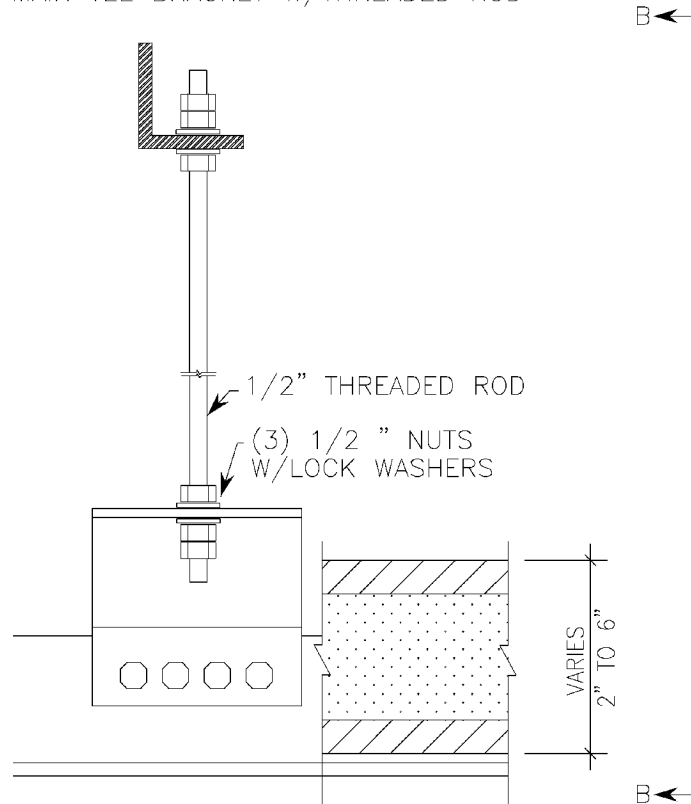
### SURFACE OPTIONS:

- \* GEL COATED
- \* NON-GEL COATED FRP – CLASS A & CLASS C SURFACES AVAILABLE.

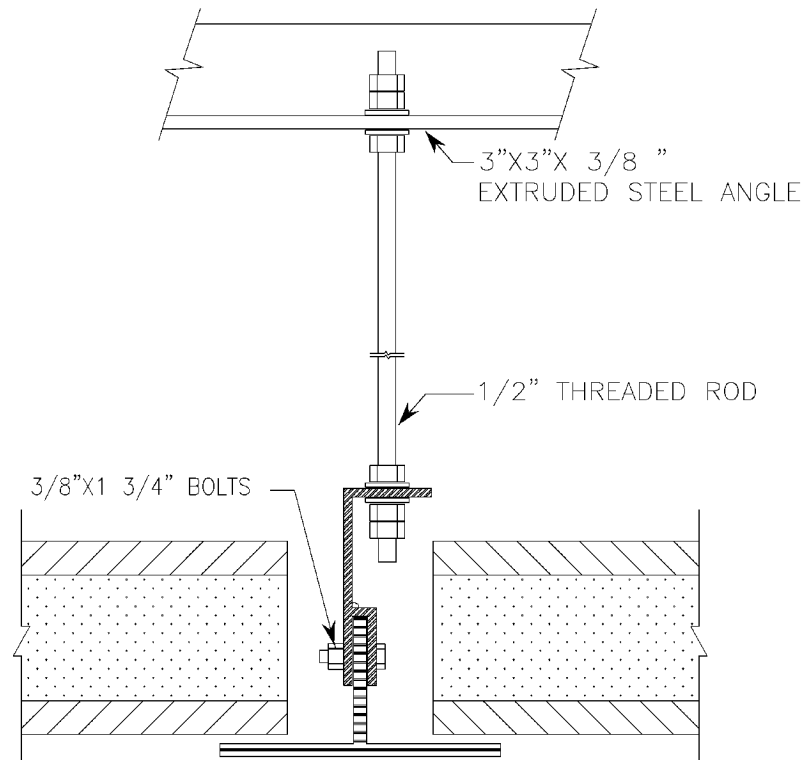
### GRID OPTIONS:

- 6" PULTRUDED

MAIN TEE BRACKET W/THREADED ROD



SECTION-B MAIN TEE BRACKET



YIELD	DWG #	F				
	CE-33	E				
		D				
		C				
		B				
	A					
	NO.	DATE	E.C.N.	REVISIONS		

DATE:	2-11-02
SCALE:	N.T.S.
DRAWN:	JGB
CHECKED:	G.B.

**WALL AND CEILING SYSTEMS**

858 WOODCOVE COURT  
 CHESTERFIELD, MO 63017  
 888-736-2726  
 FAX 314-530-9949

**SUSPENDED CEILING  
 INVERTED T RUNNERS (TYPICAL JOINTS)**