


YIELD	DWG #	F			
	DF-11	E			
		D			
		C			
		B			
	A				
	NO.	DATE	E.C.N.	REVISIONS	

DATE:
2-11-02

SCALE:
N.T.S.

DRAWN:
JGB

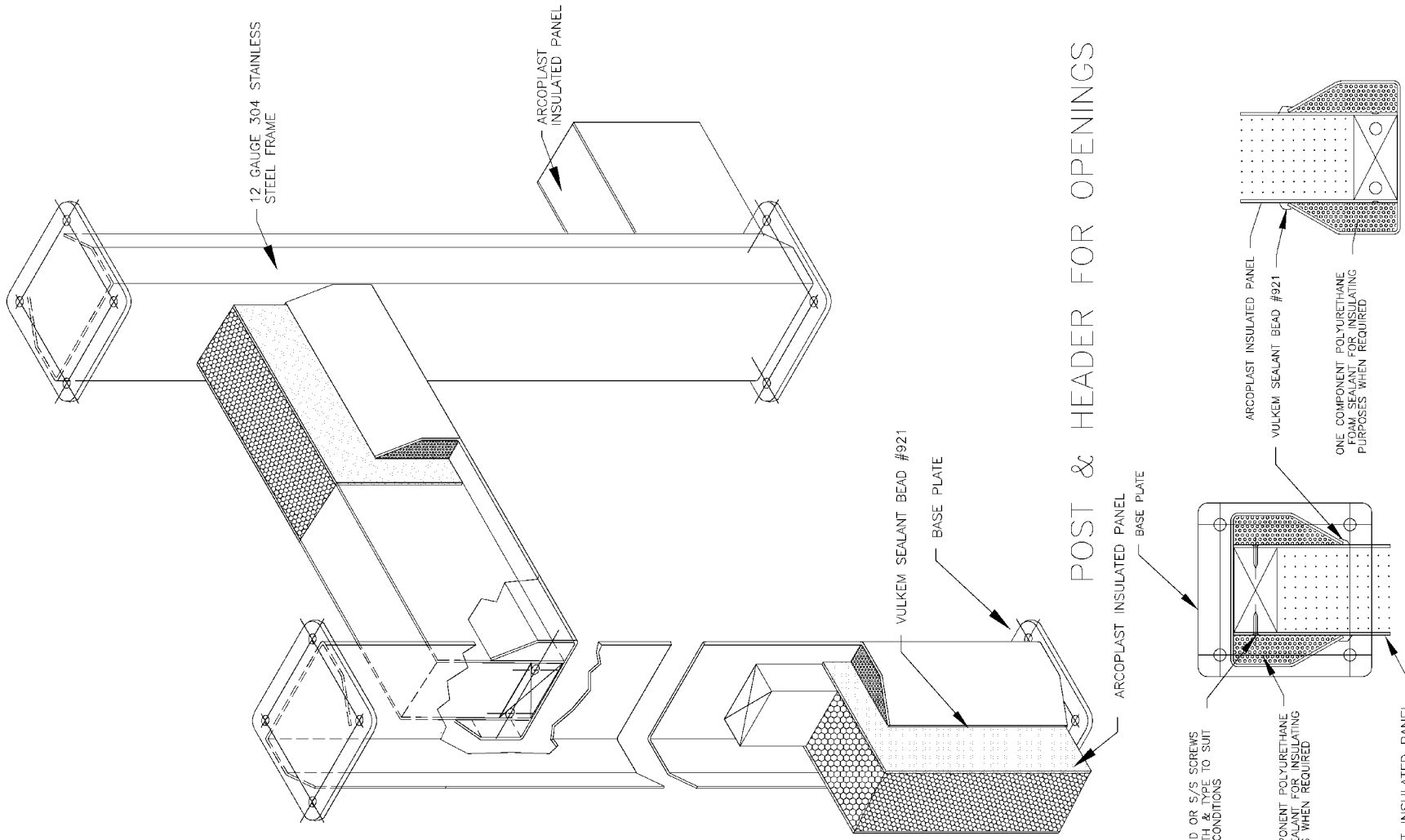
CHECKED:
G.B.



WALL AND CEILING SYSTEMS

858 WOODCOVE COURT
CHESTERFIELD, MO 63017
888-736-2726
FAX 314-530-9949

S.S. DOOR FRAME



POST & HEADER FOR OPENINGS

HEADER JUNCTION

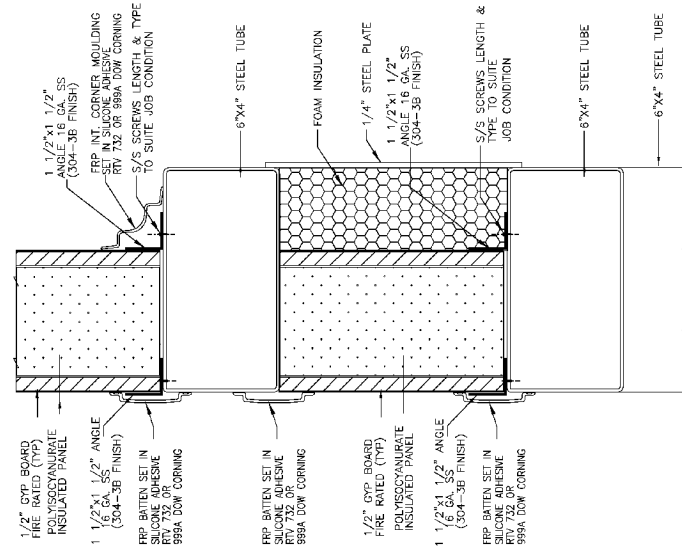
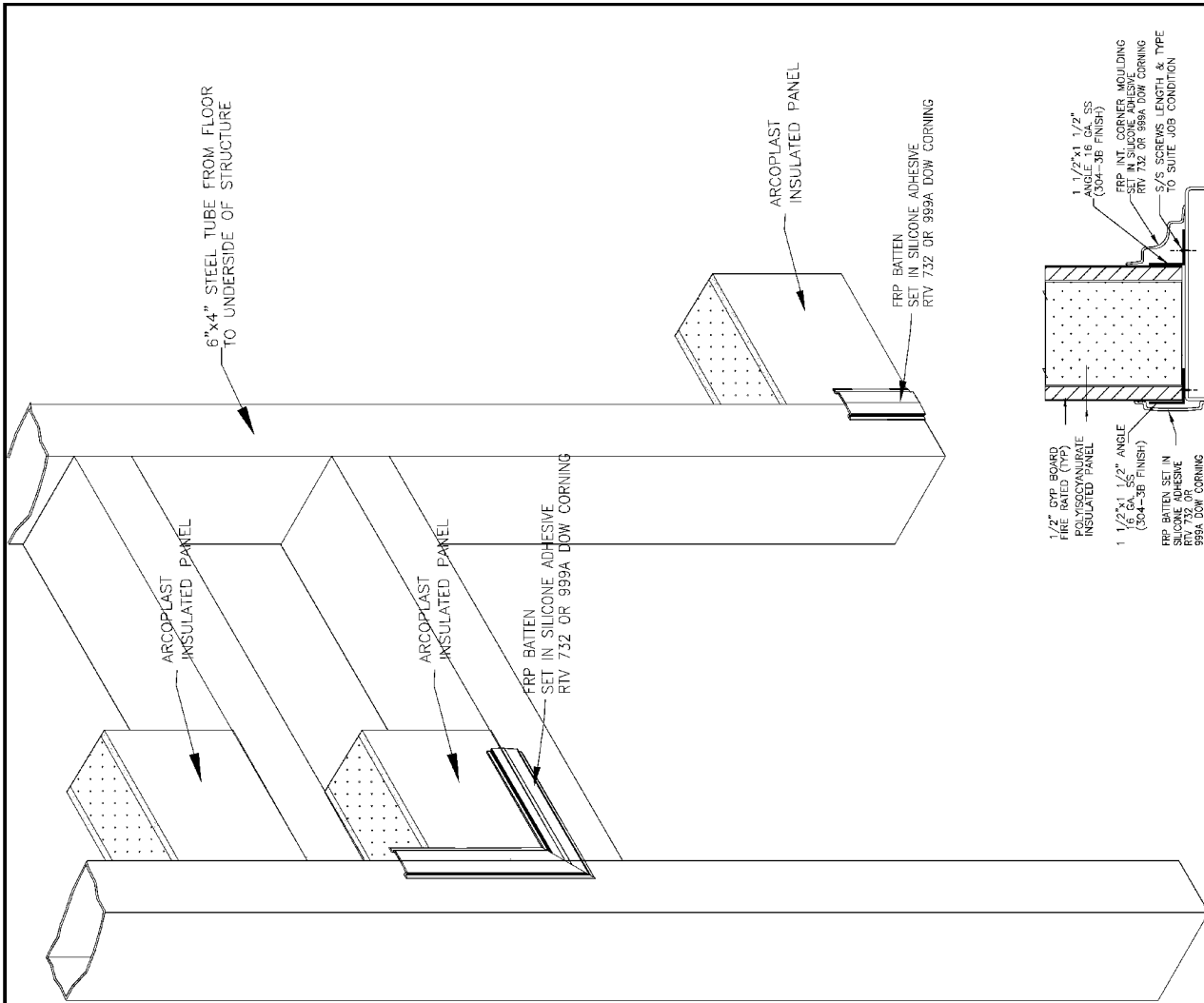
BASE & TOP PLATE

YIELD	DWG #	F				DATE:	2-11-02
	DF-12	E				SCALE:	N.T.S.
		D				DRAWN:	JGB
		C				CHECKED:	G.B.
		B					
	A						
	NO.	DATE	E.C.N.	REVISIONS			

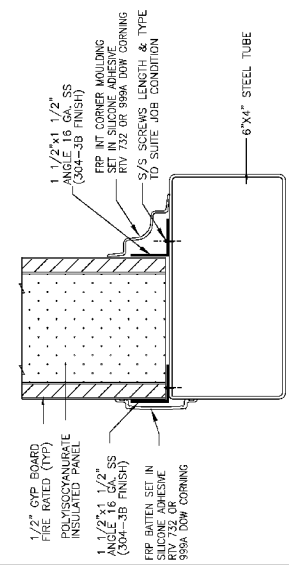
arcoplast
WALL AND CEILING SYSTEMS

858 WOODCOVE COURT
CHESTERFIELD, MO 63017
888-736-2726
FAX 314-530-9949

DOOR FRAME



HEAD DETAIL



JAMB DETAIL

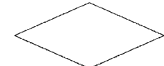
YIELD	DWG #	F				
	DF-13	E				
		D				
		C				
		B				
		A				
		NO.	DATE	E.C.N.	REVISIONS	

DATE:
2-11-02

SCALE:
N.T.S.

DRAWN:
JGB

CHECKED:
G.B.



arcoplast
WALL AND CEILING SYSTEMS

858 WOODCOVE COURT
CHESTERFIELD, MO 63017
888-736-2726
FAX 314-530-9949

S.S. DOOR FRAME