

YIELD	DWG #	F			
	PA-10	E			
		D			
		C			
		B			
	A				
	NO.	DATE	E.C.N.	REVISIONS	

DATE:  
2-11-02

SCALE:  
N.T.S.

DRAWN:  
JGB

CHECKED:  
G.B.



**arcoplast**  
WALL AND CEILING SYSTEMS

858 WOODCOVE COURT  
CHESTERFIELD, MO 63017  
888-736-2726  
FAX 314-530-9949

INSULATED WALL PANEL: WALL PANEL JUNCTION

# ARCOPLAST PARTITION SYSTEM

- \* POLYISOCYANURATE FOAM
- \* EXPANDED POLYSTYRENE FOAM

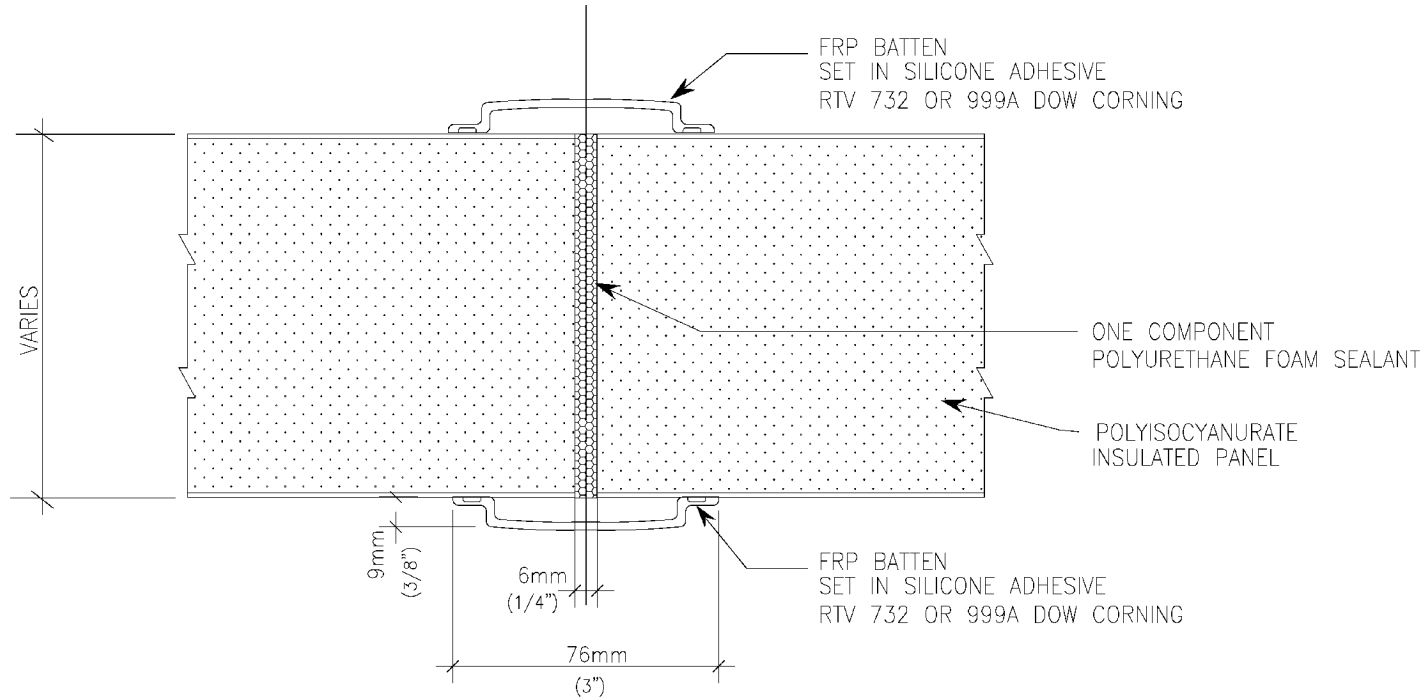
# RECOMMENDED PANEL DIMENSIONS

- MIN. 8'x 8'
- MAX. 10'x 50'

# NOTES:

## SURFACE OPTIONS:

- \* GEL COATED
- \* NON-GEL COATED FRP - CLASS A & CLASS C SURFACES AVAILABLE.



YIELD	DWG #	F			DATE:	
	PA-11	E			2-11-02	
		D			SCALE:	
		C			N.T.S.	
		B			DRAWN:	
	A			JGB	CHECKED:	
		NO.	DATE	E.C.N.	REVISIONS	G.B.

## arcoplast

**WALL AND CEILING SYSTEMS**

858 WOODCOVE COURT  
CHESTERFIELD, MO 63017  
888-736-2726  
FAX 314-530-9949

**INSULATED WALL PANEL  
TYPICAL JOINT (FREE STANDING)**

# ARCOPLAST PARTITION SYSTEM

- \* POLYISOCYANURATE FOAM
- \* EXPANDED POLYSTYRENE FOAM
- \* GYPSUM, PLYWOOD OR CEMENT ON ONE SIDE

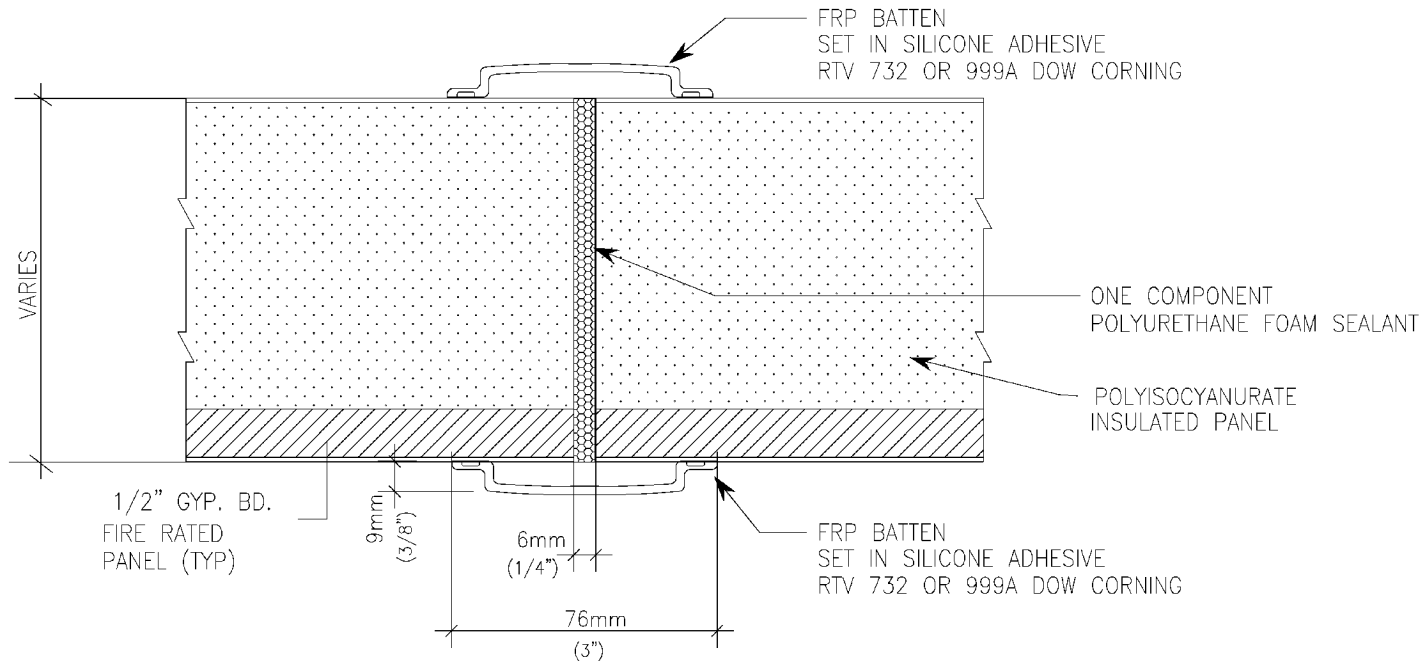
# RECOMMENDED PANEL DIMENSIONS


- MIN. 8'x 8'
- MAX. 10'x 50'

# NOTES:

## SURFACE OPTIONS:

- \* GEL COATED
- \* NON-GEL COATED FRP - CLASS A & CLASS C SURFACES AVAILABLE.



YIELD	DWG #	F			DATE:	 <b>arcoplast</b> WALL AND CEILING SYSTEMS	858 WOODCOVE COURT CHESTERFIELD, MO 63017 888-736-2726 FAX 314-530-9949
	PA-12	E			2-11-02		
		D			SCALE:		
		C			N.T.S.		
		B			DRAWN:		
	A			JGB	INSULATED WALL PANEL TYPICAL JOINT (FREE STANDING)		
	NO.	DATE	E.C.N.	REVISIONS			
					CHECKED:		
					G.B.		

ARCOPLAST PARTITION SYSTEM  
CORE OPTIONS:

- \* POLYISOCYANURATE FOAM
- \* EXPANDED POLYSTYRENE FOAM
- \* GYPSUM, PLYWOOD OR CEMENT ON BOTH SIDES

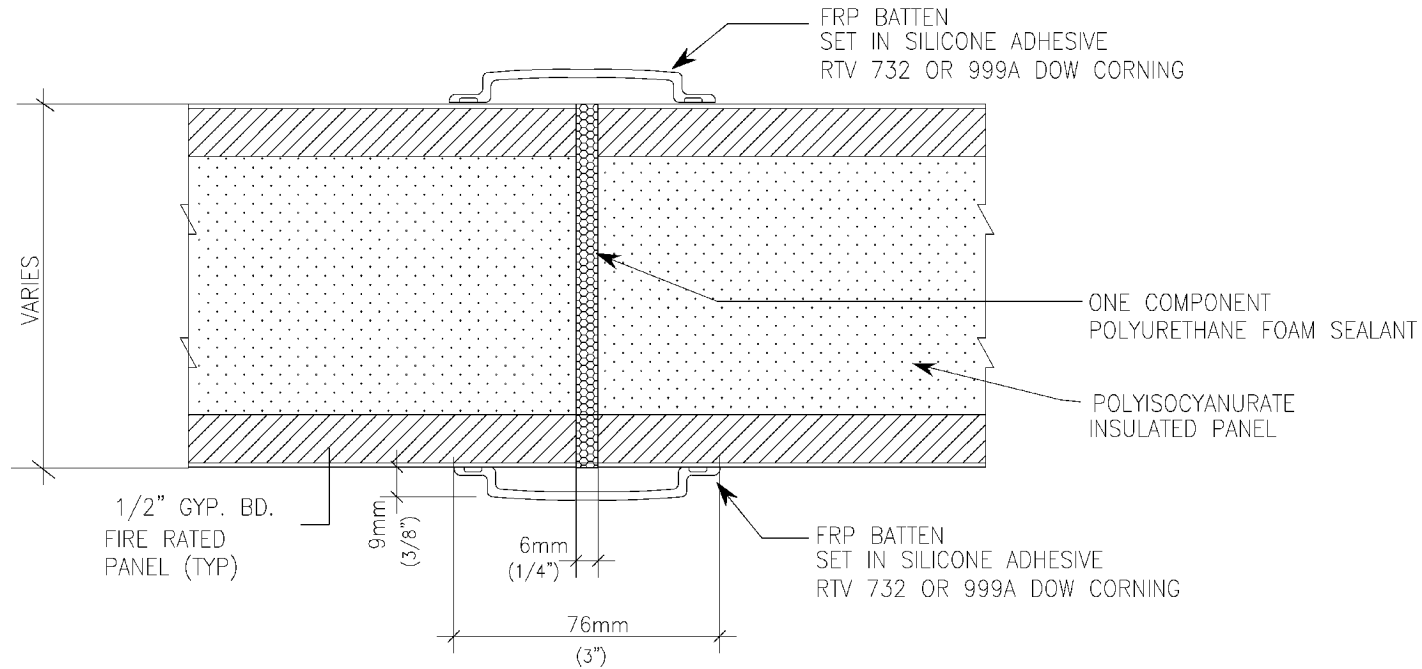
RECOMMENDED PANEL DIMENSIONS

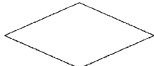
- MIN. 8'x 8'
- MAX. 10'x 50'

NOTES:

SURFACE OPTIONS:

- \* GEL COATED
- \* NON-GEL COATED FRP - CLASS A & CLASS C SURFACES AVAILABLE.



YIELD	DWG # <b>PA-13</b>	F			DATE: 2-11-02	 <b>arcoplast</b> WALL AND CEILING SYSTEMS 858 WOODCOVE COURT CHESTERFIELD, MO 63017 888-736-2726 FAX 314-530-9949
		E			SCALE: N.T.S.	
		D			DRAWN: JGB	
		C			CHECKED: G.B.	
		B				
	A				INSULATED WALL PANEL TYPICAL JOINT (FREE STANDING)	
		NO.	DATE	E.C.N.	REVISIONS	

# ARCOPLAST PARTITION SYSTEM

## CORE OPTIONS:

- \* POLYISOCYANURATE FOAM
- \* EXPANDED POLYSTYRENE FOAM
- \* PLYWOOD FOAM PLYWOOD
- \* PLYWOOD FOAM

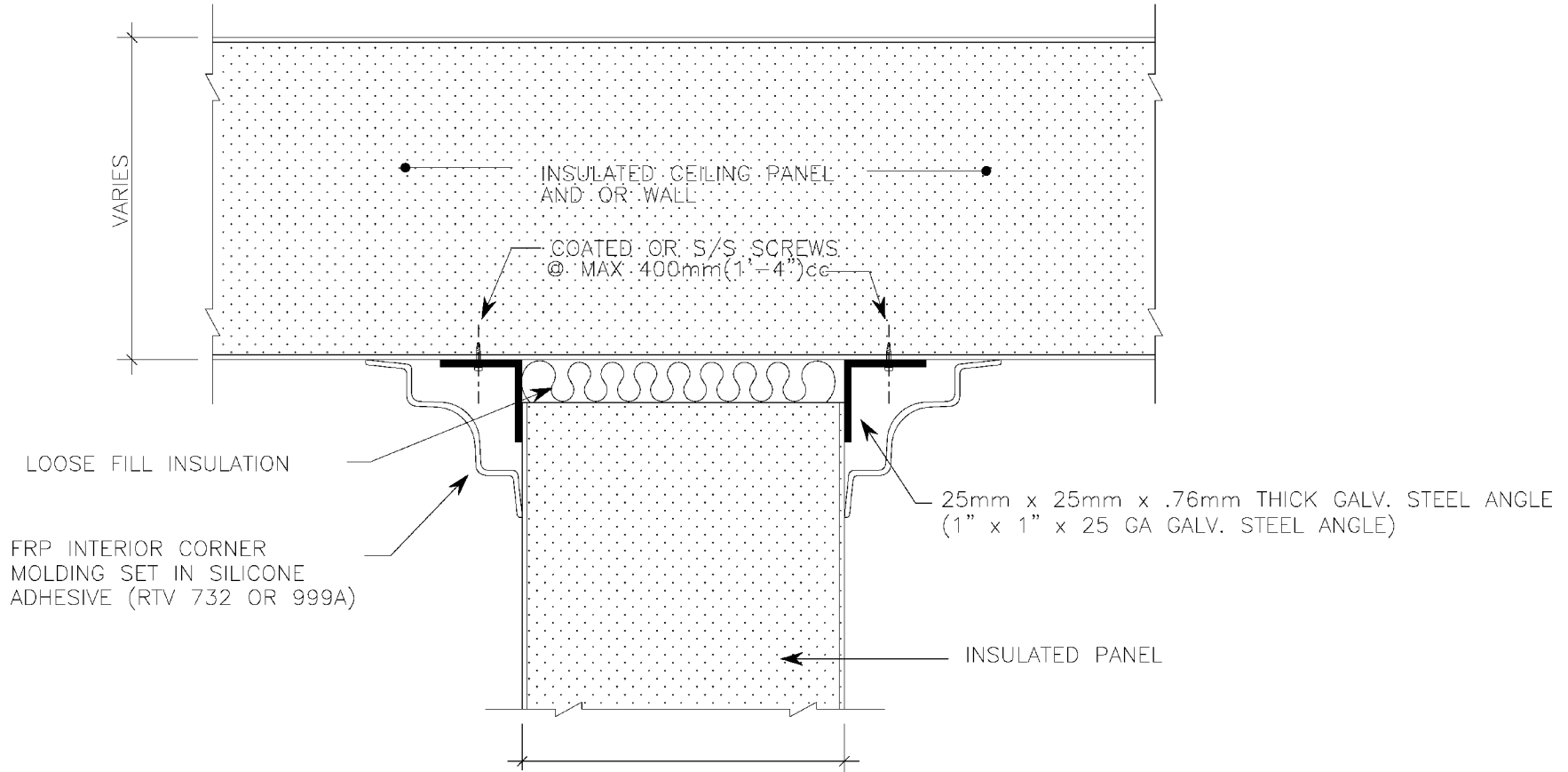
## RECOMMENDED PANEL DIMENSIONS


- MIN. 8'x 8'
- MAX. 10'x 50'

## NOTES:

### SURFACE OPTIONS:

- \* GEL COATED
- \* NON-GEL COATED FRP - CLASS A & CLASS C SURFACES AVAILABLE.



YIELD	DWG #	F			DATE:		858 WOODCOVE COURT CHESTERFIELD, MO 63017 888-736-2726 FAX 314-530-9949
	PA-14	E			2-11-02		
		D			SCALE:		
		C			N.T.S.		
		B			DRAWN:		
	A			JGB	INSULATED PANEL WALL CEILING JUNCTION		
	NO.	DATE	E.C.N.	REVISIONS			
					CHECKED:		
					G.B.		

ARCOPLAST PARTITION SYSTEM  
CORE OPTIONS:

- \* POLYISOCYANURATE FOAM
- \* EXPANDED POLYSTYRENE FOAM

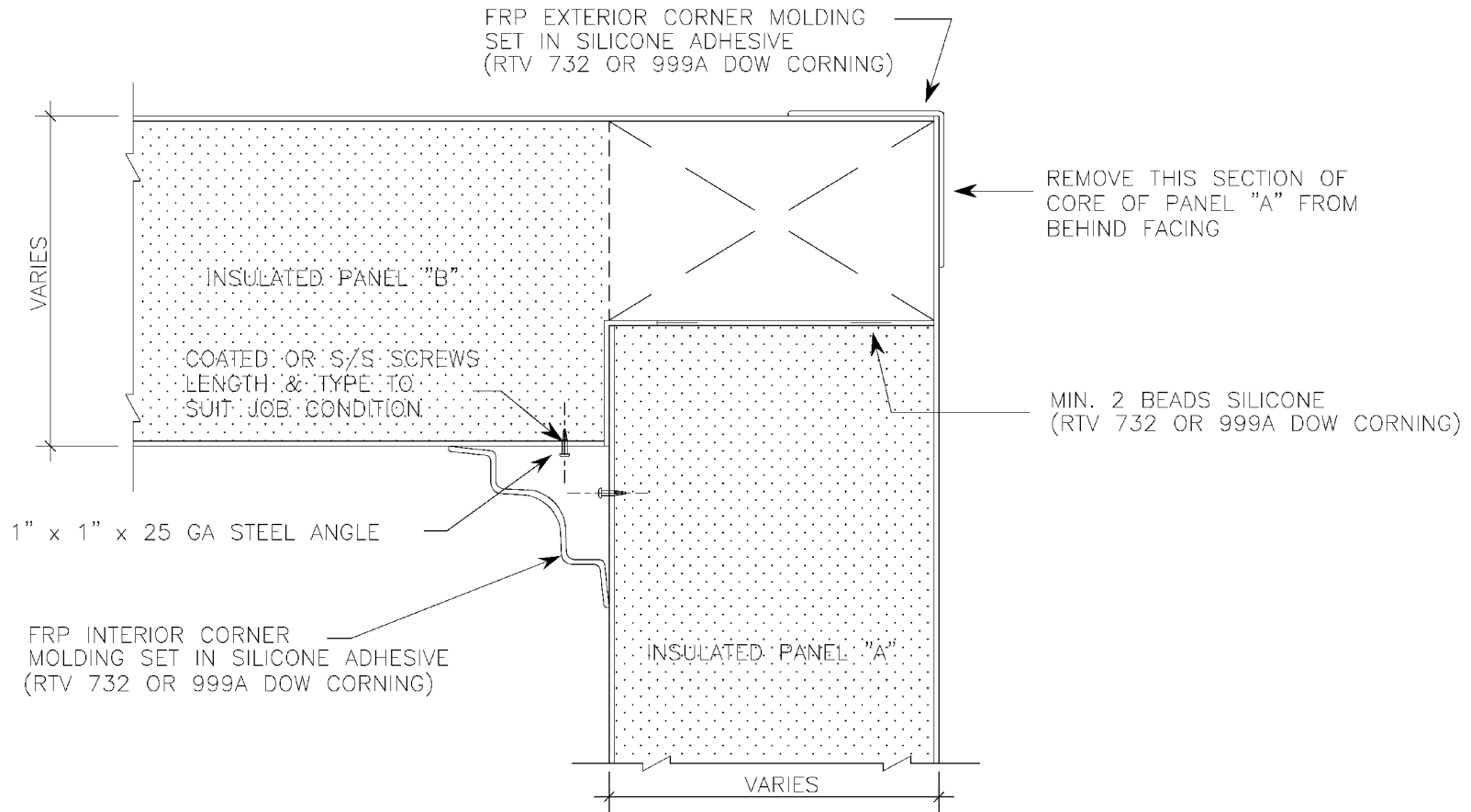
RECOMMENDED PANEL DIMENSIONS

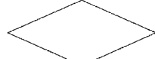
- MIN. 8'x 8'
- MAX. 10'x 50'

NOTES:

SURFACE OPTIONS:

- \* GEL COATED
- \* NON-GEL COATED FRP - CLASS A & CLASS C SURFACES AVAILABLE.



	DWG # <b>PA-15</b>	F				DATE: 2-11-02	 <b>arcoplast</b> WALL AND CEILING SYSTEMS 858 WOODCOVE COURT CHESTERFIELD, MO 63017 888-736-2726 FAX 314-530-9949
YIELD		E				SCALE: N.T.S.	
		D				DRAWN: JGB	
		C				CHECKED: G.B.	
		B					
		A					INSULATED WALL PANEL FREE STANDING CORNER PANEL
		NO.	DATE	E.C.N.	REVISIONS		

ARCOPLAST PARTITION SYSTEM  
CORE OPTIONS:

- \* POLYISOCYANURATE FOAM
- \* EXPANDED POLYSTYRENE FOAM
- \* PLYWOOD FOAM PLYWOOD
- \* PLYWOOD FOAM

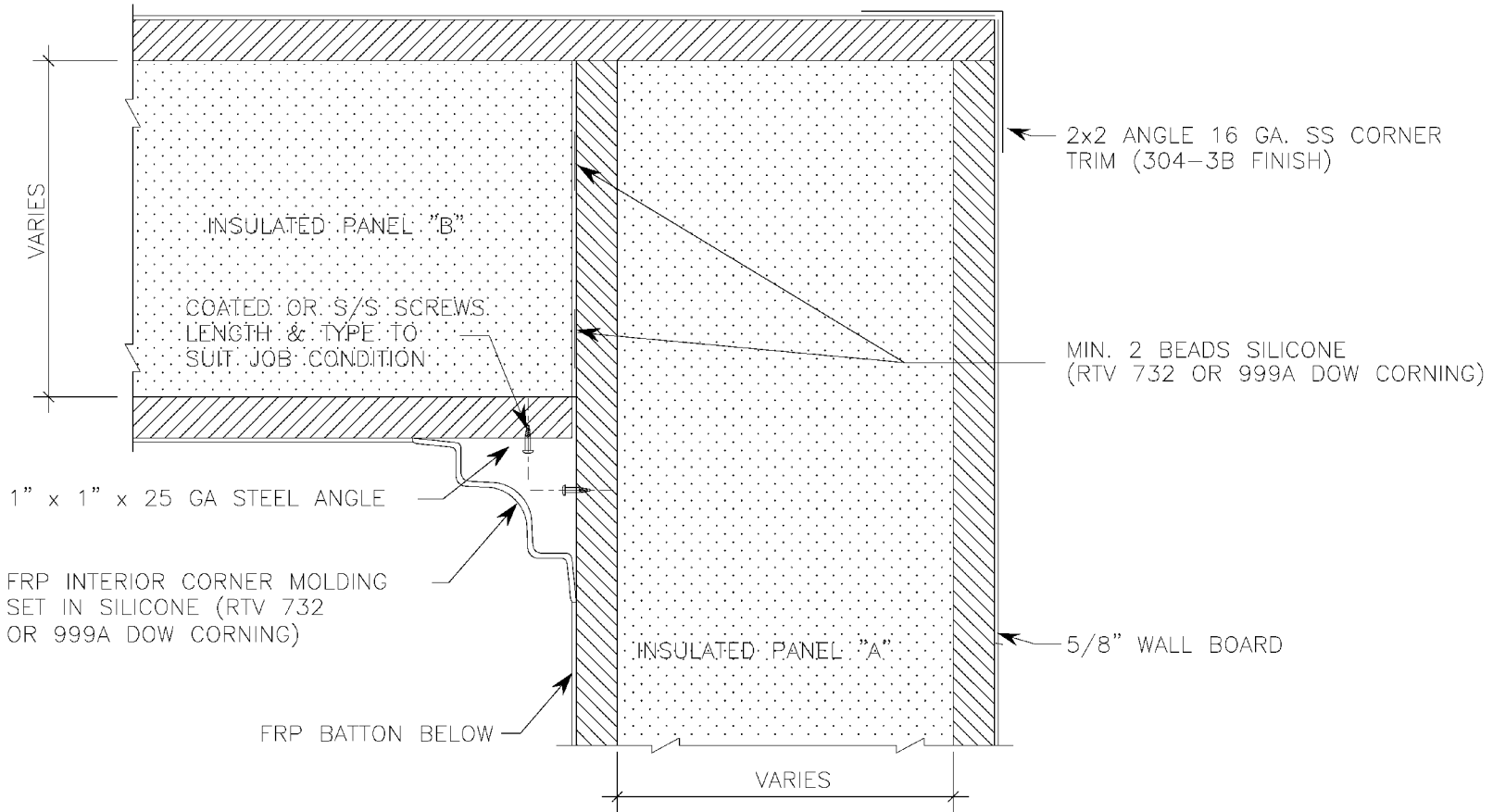
RECOMMENDED PANEL DIMENSIONS

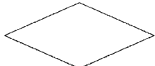
- MIN. 8'x 8'
- MAX. 10'x 50'

NOTE:

SURFACE OPTIONS:

- \* GEL COATED
- \* NON-GEL COATED FRP - CLASS A & CLASS C SURFACES AVAILABLE.



YIELD	DWG #	F			DATE:	 <b>arcoplast</b> WALL AND CEILING SYSTEMS	858 WOODCOVE COURT CHESTERFIELD, MO 63017 888-736-2726 FAX 314-530-9949
	PA-16	E			2-11-02		
		D			SCALE:		
		C			N.T.S.		
		B			DRAWN:		
	A			JGB	CHECKED:	INSULATED WALL PANEL FREE STANDING CORNER PANEL	
	NO.	DATE	E.C.N.	REVISIONS	G.B.		

# ARCOPLAST PARTITION SYSTEM

# RECOMMENDED PANEL DIMENSIONS

# NOTE:

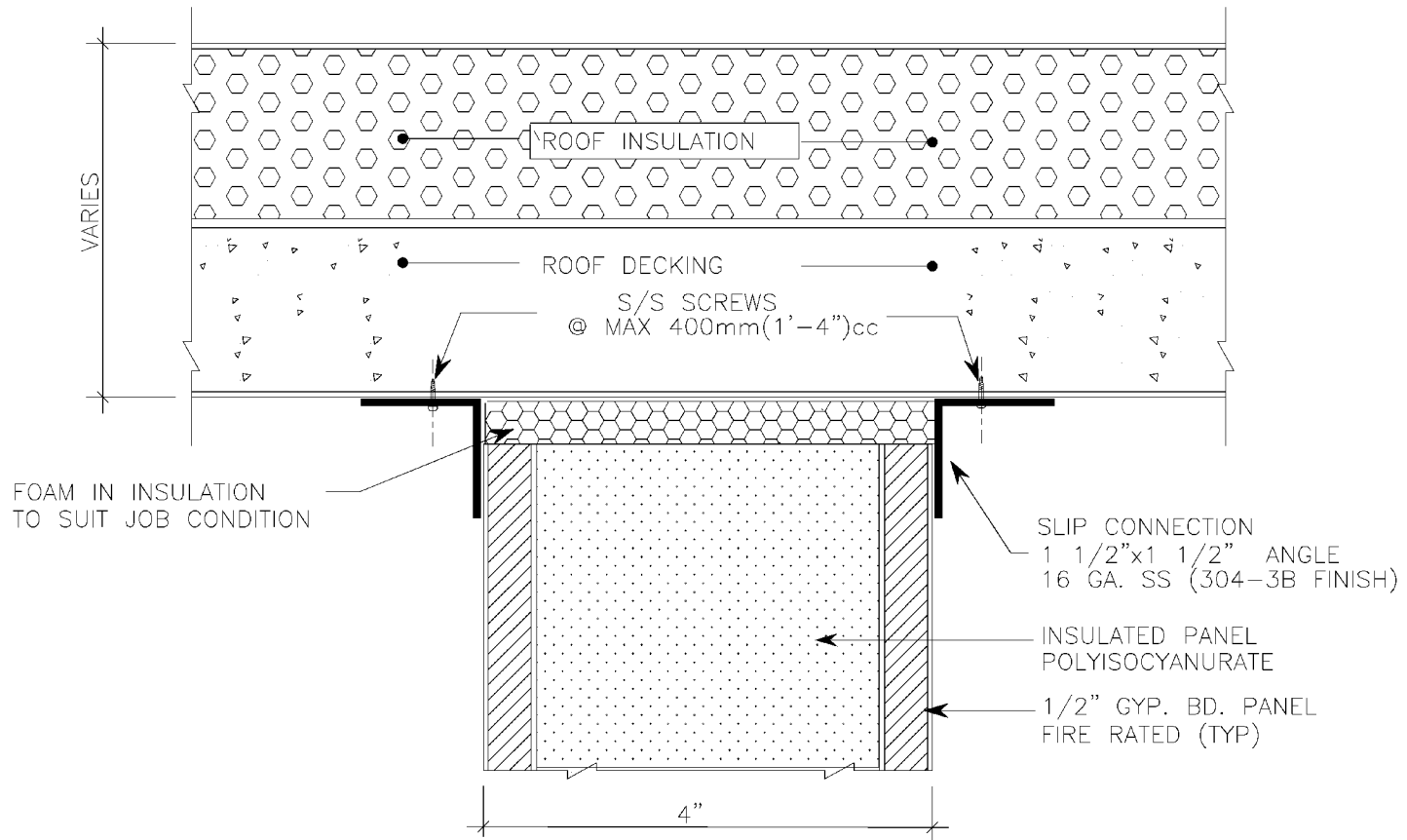
## CORE OPTIONS:

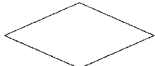
- \* POLYISOCYANURATE FOAM
- \* EXPANDED POLYSTYRENE FOAM
- \* GYPSUM FOAM GYPSUM
- \* GYPSUM FOAM

- MIN. 8'x 8'
- MAX. 10'x 50'

## SURFACE OPTIONS:

- \* GEL COATED
- \* NON-GEL COATED FRP - CLASS A & CLASS C SURFACES AVAILABLE.



YIELD	DWG # <b>PA-17-A</b>	F				DATE: 2-11-02	 <b>arcoplast</b> WALL AND CEILING SYSTEMS	858 WOODCOVE COURT CHESTERFIELD, MO 63017 888-736-2726 FAX 314-530-9949
	E					SCALE: N.T.S.		
	D					DRAWN: JGB		
	C					CHECKED: G.B.		
	B							
	A	NO.	DATE	E.C.N.	REVISIONS		INSULATED PANEL WALL CEILING JUNCTION	



# ARCOPLAST PARTITION SYSTEM

## CORE OPTIONS:

- \* POLYISOCYANURATE FOAM
- \* EXPANDED POLYSTYRENE FOAM
- \* GYPSUM FOAM GYPSUM
- \* GYPSUM FOAM
- \* PLYWOOD FOAM PLYWOOD
- \* PLYWOOD FOAM
- \* CEMENT FOAM CEMENT
- \* CEMENT FOAM

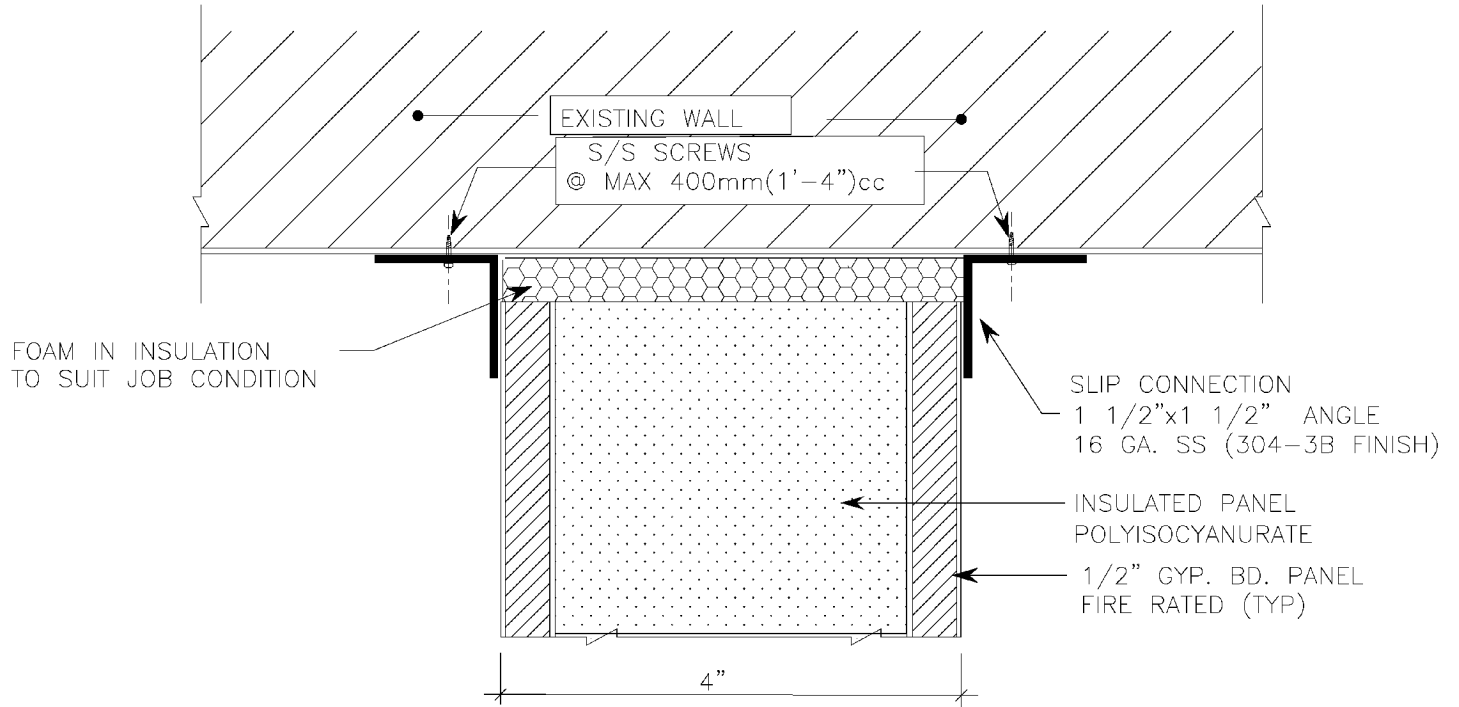
## RECOMMENDED PANEL DIMENSIONS

- MIN. 8'x 8'
- MAX. 10'x 50'

## NOTE:

### SURFACE OPTIONS:

- \* GEL COATED
- \* NON-GEL COATED FRP - CLASS A & CLASS C SURFACES AVAILABLE.



YIELD	DWG #	F				DATE:	
	PA-17-B	E				2-11-02	
		D				SCALE:	
		C				N.T.S.	
		B				DRAWN:	
	A				JGB	CHECKED:	
		NO.	DATE	E.C.N.	REVISIONS	G.B.	

**WALL AND CEILING SYSTEMS**

858 WOODCOVE COURT  
 CHESTERFIELD, MO 63017  
 888-736-2726  
 FAX 314-530-9949

**INSULATED PANEL  
 WALL CEILING JUNCTION**

# ARCOPLAST PARTITION SYSTEM

## CORE OPTIONS:

- \* POLYISOCYANURATE FOAM
- \* EXPANDED POLYSTYRENE FOAM
- \* GYPSUM FOAM GYPSUM
- \* GYPSUM FOAM

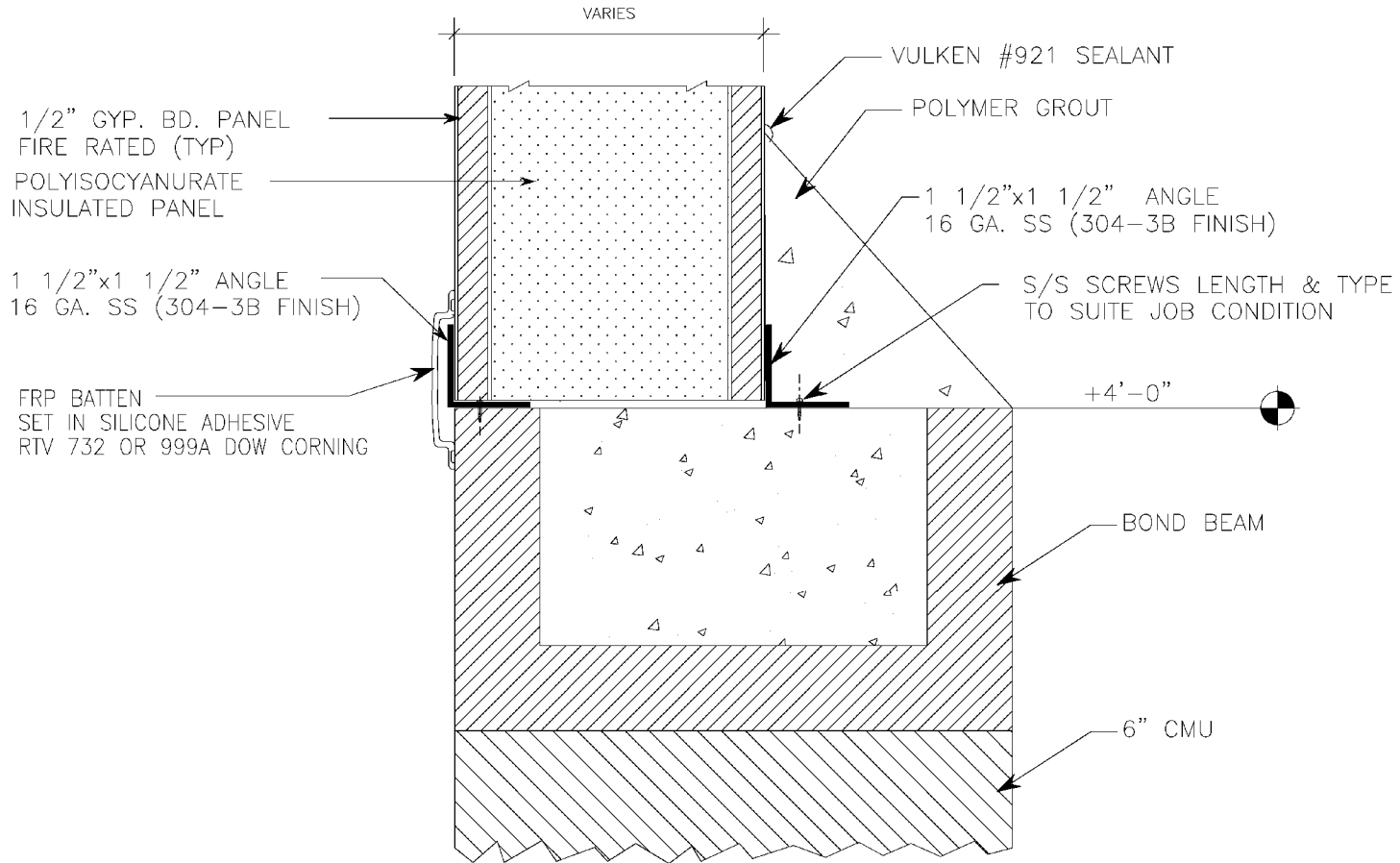
## RECOMMENDED PANEL DIMENSIONS

- MIN. 8'x 8'
- MAX. 10'x 50'

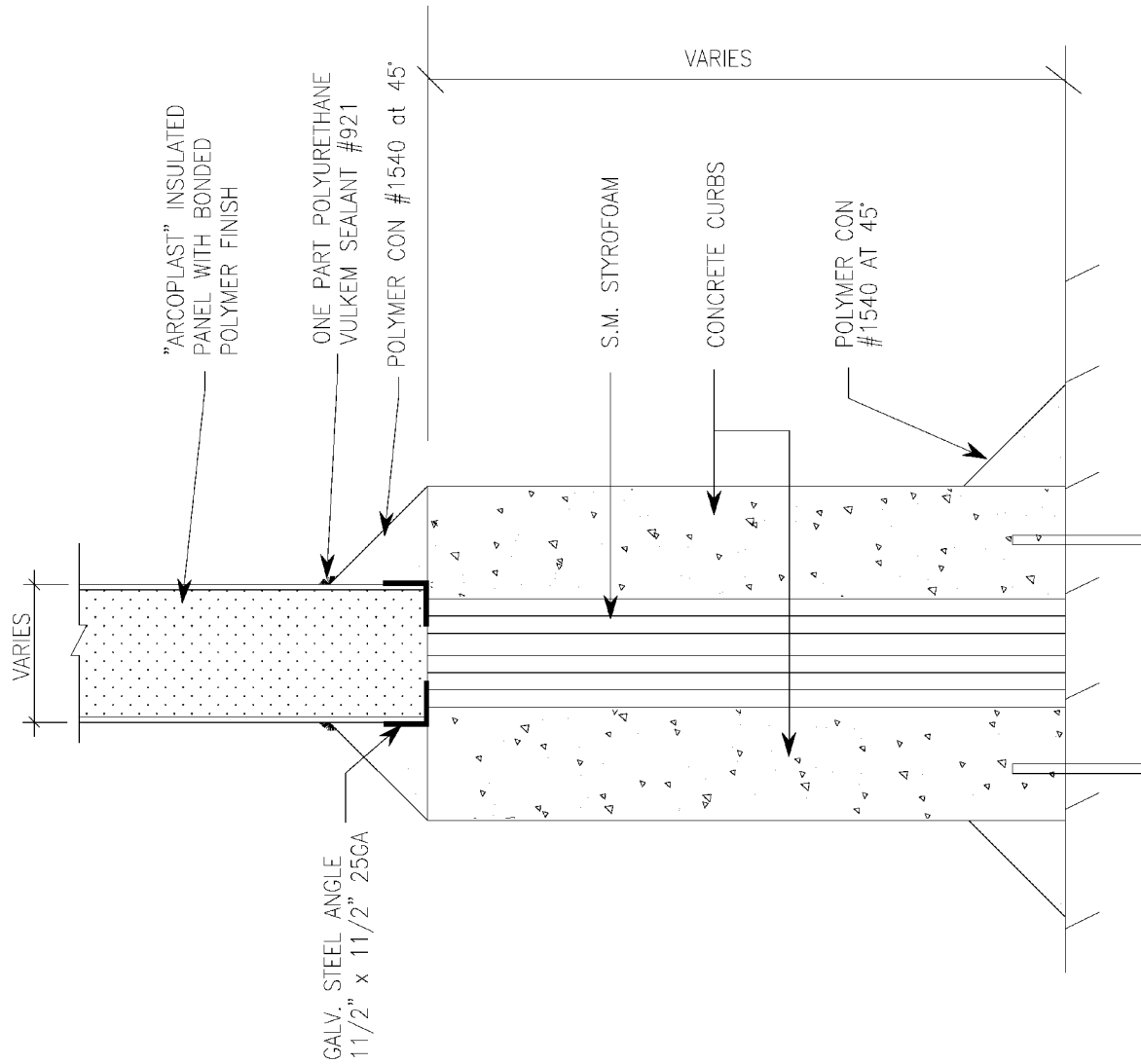
## NOTE:

### SURFACE OPTIONS:

- \* GEL COATED
- \* NON-GEL COATED FRP - CLASS A & CLASS C SURFACES AVAILABLE.



YIELD	DWG #	F			DATE:		858 WOODCOVE COURT CHESTERFIELD, MO 63017 888-736-2726 FAX 314-530-9949
	PA-17-C	E			2-11-02		
		D			SCALE:		
		C			N.T.S.		
		B			DRAWN:		
	A			JGB	<b>WALL AND CEILING SYSTEMS</b>	<b>INSULATED PANEL WALL JUNCTION</b>	
	NO.	DATE	E.C.N.	REVISIONS			CHECKED:
					G.B.		



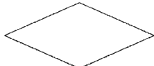
YIELD	DWG #	F			
	PA-18	E			
		D			
		C			
		B			
	A				
	NO.	DATE	E.C.N.	REVISIONS	

DATE:  
2-11-02

SCALE:  
N.T.S.

DRAWN:  
JGB

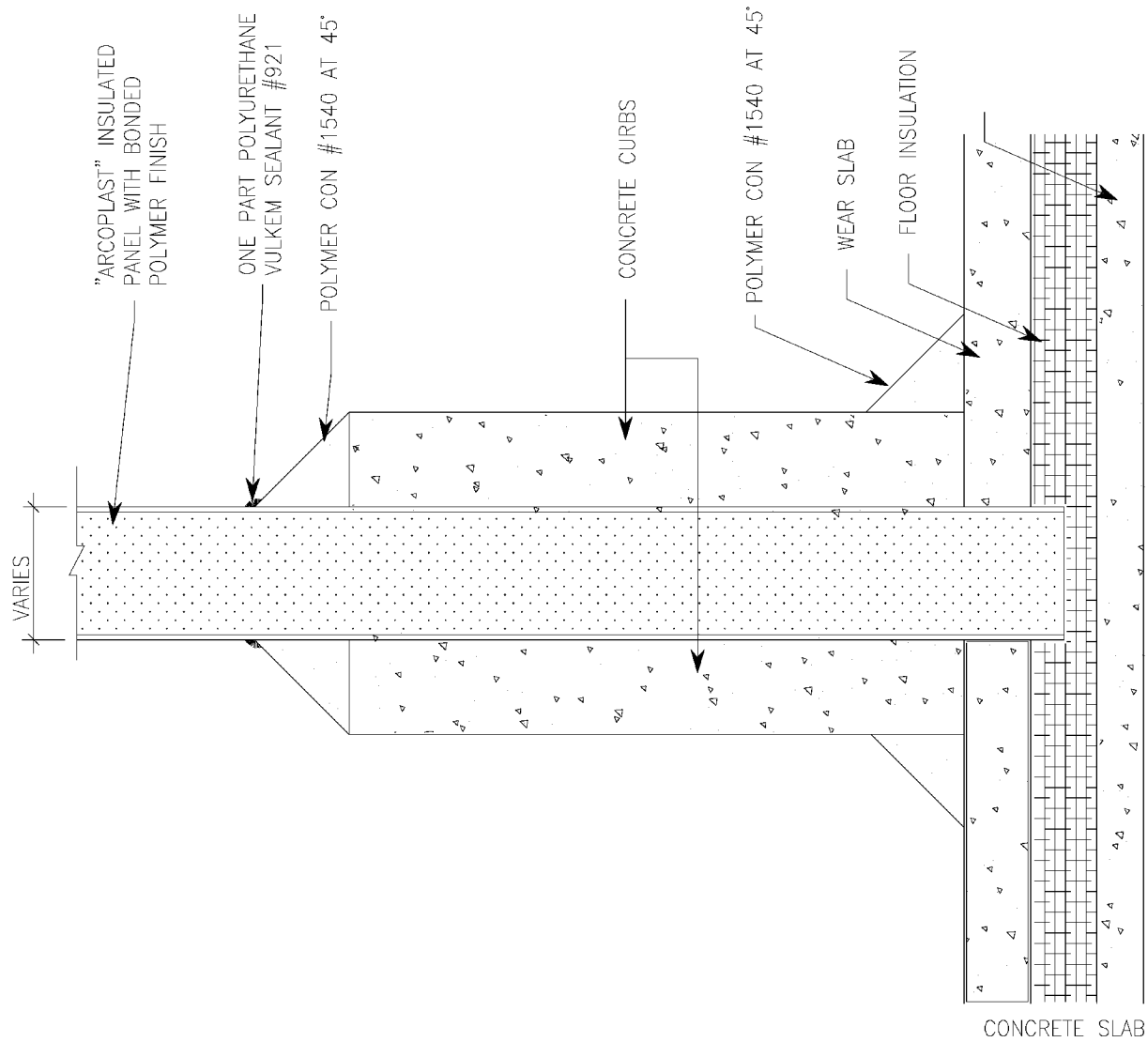
CHECKED:  
G.B.



**arcoplast**  
WALL AND CEILING SYSTEMS

858 WOODCOVE COURT  
CHESTERFIELD, MO 63017  
888-736-2726  
FAX 314-530-9949

ISULATED WALL PANEL  
LOW WALL-FLOOR CURBS




YIELD	DWG #	F			
	PA-19	E			
		D			
		C			
		B			
	A				
	NO.	DATE	E.C.N.	REVISIONS	

DATE:  
2-11-02

SCALE:  
N.T.S.

DRAWN:  
JGB

CHECKED:  
G.B.



**arcoplast**  
WALL AND CEILING SYSTEMS

858 WOODCOVE COURT  
CHESTERFIELD, MO 63017  
888-736-2726  
FAX 314-530-9949

**INSULATED WALL PANEL  
LOW WALL-FLOOR CURBS**