


YIELD	DWG #	F			
	C&WL-11	E			
		D			
		C			
		B			
	A				
	NO.	DATE	E.C.N.	REVISIONS	

DATE:
2-11-02

SCALE:
N.T.S.

DRAWN:
JGB

CHECKED:
G.B.



arcoplast
WALL AND CEILING SYSTEMS

858 WOODCOVE COURT
CHESTERFIELD, MO 63017
888-736-2726
FAX 314-530-9949

INSULATED WALL LINER PANEL
LOW WALL-FLOOR CURBS

ARCOPLAST WALL LINER PANEL

CORE OPTIONS:

- * POLYISOCYANURATE FOAM -5/8" TO 6"
- * EXPANDED POLYSTYRENE FOAM -5/8" TO 6"
- * PLYWOOD
- * PLYWOOD FOAM PLYWOOD

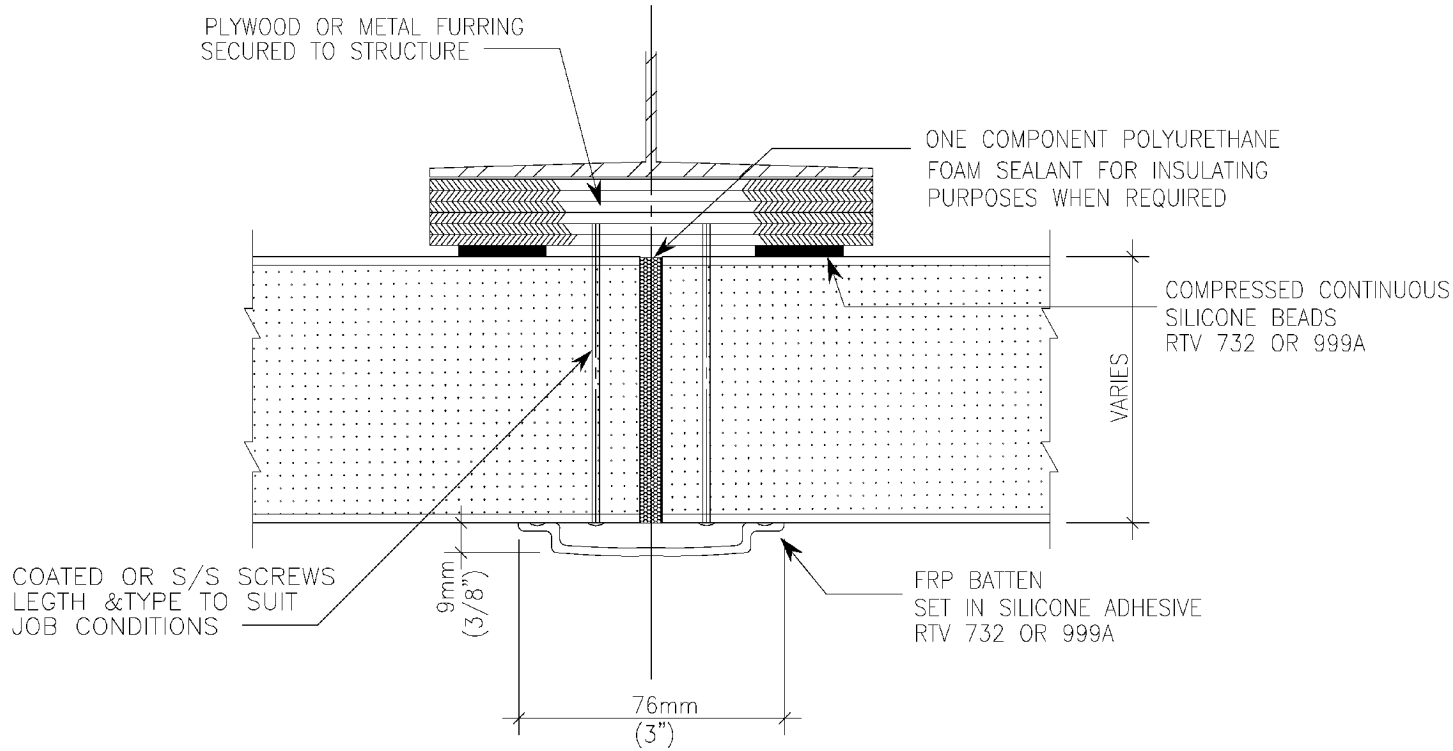
RECOMMENDED PANEL DIMENSIONS

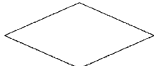
- MIN. 8'x 8'
- MAX. 10'x 50'

NOTES:

SURFACE OPTIONS:

- * GEL COATED
- * NON-GEL COATED FRP - CLASS A & CLASS C SURFACES AVAILABLE.



YIELD	DWG #	F			DATE:	 arcoplast WALL AND CEILING SYSTEMS	858 WOODCOVE COURT CHESTERFIELD, MO 63017 888-736-2726 FAX 314-530-9949
	C&WL-12	E			2-11-02		
		D			SCALE:		
		C			N.T.S.		
		B			DRAWN:		
	A			JGB	ATTACHED CEILING OR WALL LINER PANEL (TYPICAL PANEL JOINTS)		
	NO.	DATE	E.C.N.	REVISIONS			
					CHECKED:		
					G.B.		

ARCOPLAST WALL LINER PANEL
CORE OPTIONS THICKNESS OPTIONS

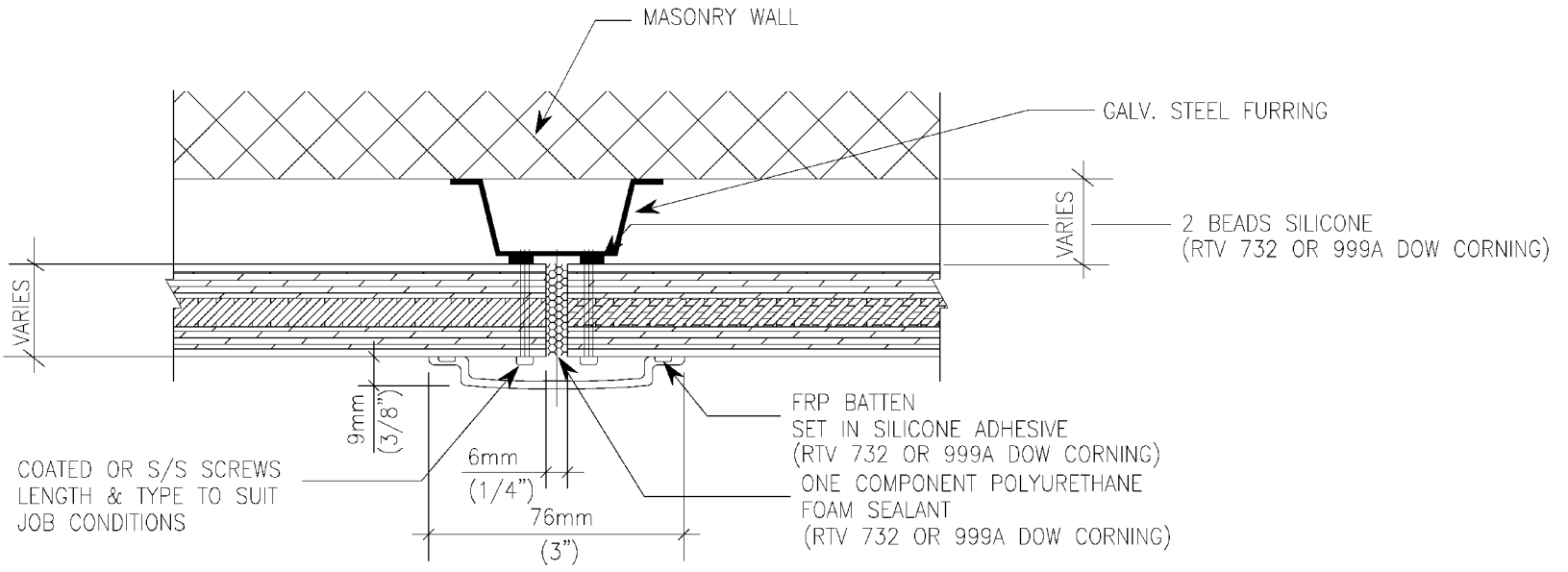
- PLYWOOD 1/4" - 1"
- SOLID 5mm - 6mm
- CEMENT 3mm - 4mm - 6mm

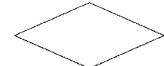
RECOMMENDED PANEL DIMENSIONS

MIN. 4'x 8'
MAX. 10'x 50'

NOTES:

- SURFACE OPTIONS:
- * GEL COATED
 - * NON-GEL COATED FRP - CLASS A & CLASS C SURFACES AVAILABLE.



YIELD	DWG #	F			DATE:	 arcoplast WALL AND CEILING SYSTEMS	858 WOODCOVE COURT CHESTERFIELD, MO 63017 888-736-2726 FAX 314-530-9949
	C&WL-13	E			2-11-02		
		D			SCALE:		
		C			N.T.S.		
		B			DRAWN:		
	A			JGB	CHECKED:	ATTACHED CEILING OR WALL LINER PANEL TYPICAL JOINT (FURRING SUPPORT)	
	NO.	DATE	E.C.N.	REVISIONS	G.B.		

ARCOPLAST WALL LINER PANEL

CORE OPTIONS

- PLYWOOD
- SOLID
- CEMENT

1/4" - 1"
5mm - 6mm
3mm - 4mm - 6mm

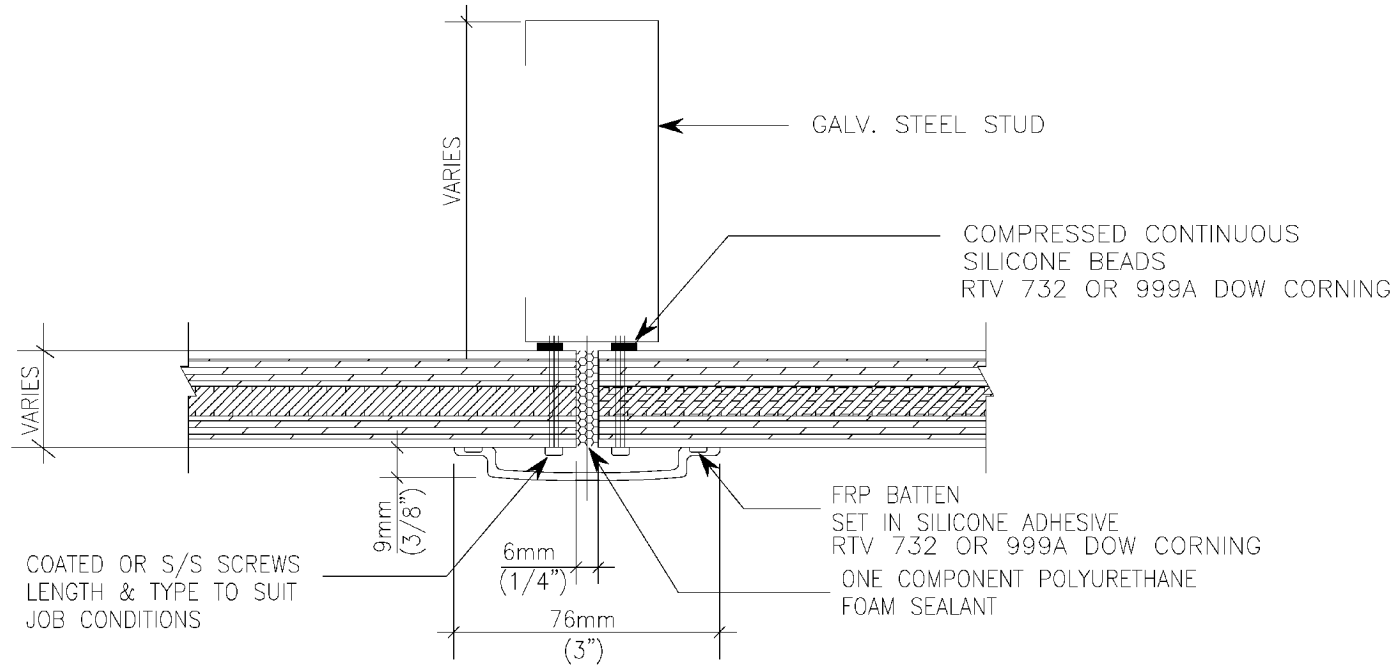
RECOMMENDED PANEL DIMENSIONS


MIN. 4'x 8'
MAX. 10'x 50'

NOTES:

SURFACE OPTIONS:

- * GEL COATED
- * NON-GEL COATED FRP - CLASS A & CLASS C SURFACES AVAILABLE.



YIELD	DWG #	F			DATE:		858 WOODCOVE COURT CHESTERFIELD, MO 63017 888-736-2726 FAX 314-530-9949
	C&WL-14	E			2-11-02		
		D			SCALE:		
		C			N.T.S.		
		B			DRAWN:		
	A			JGB	ATTACHED CEILING/WALL LINER PANEL (STUD SUPPORTS)		
	NO.	DATE	E.C.N.	REVISIONS			
					CHECKED:		
					G.B.		

ARCOPLAST WALL LINER PANEL

CORE OPTIONS:

- * POLYISOCYANURATE FOAM -5/8" TO 6"
- * EXPANDED POLYSTYRENE FOAM -5/8" TO 6"
- * PLYWOOD
- * PLYWOOD FOAM PLYWOOD

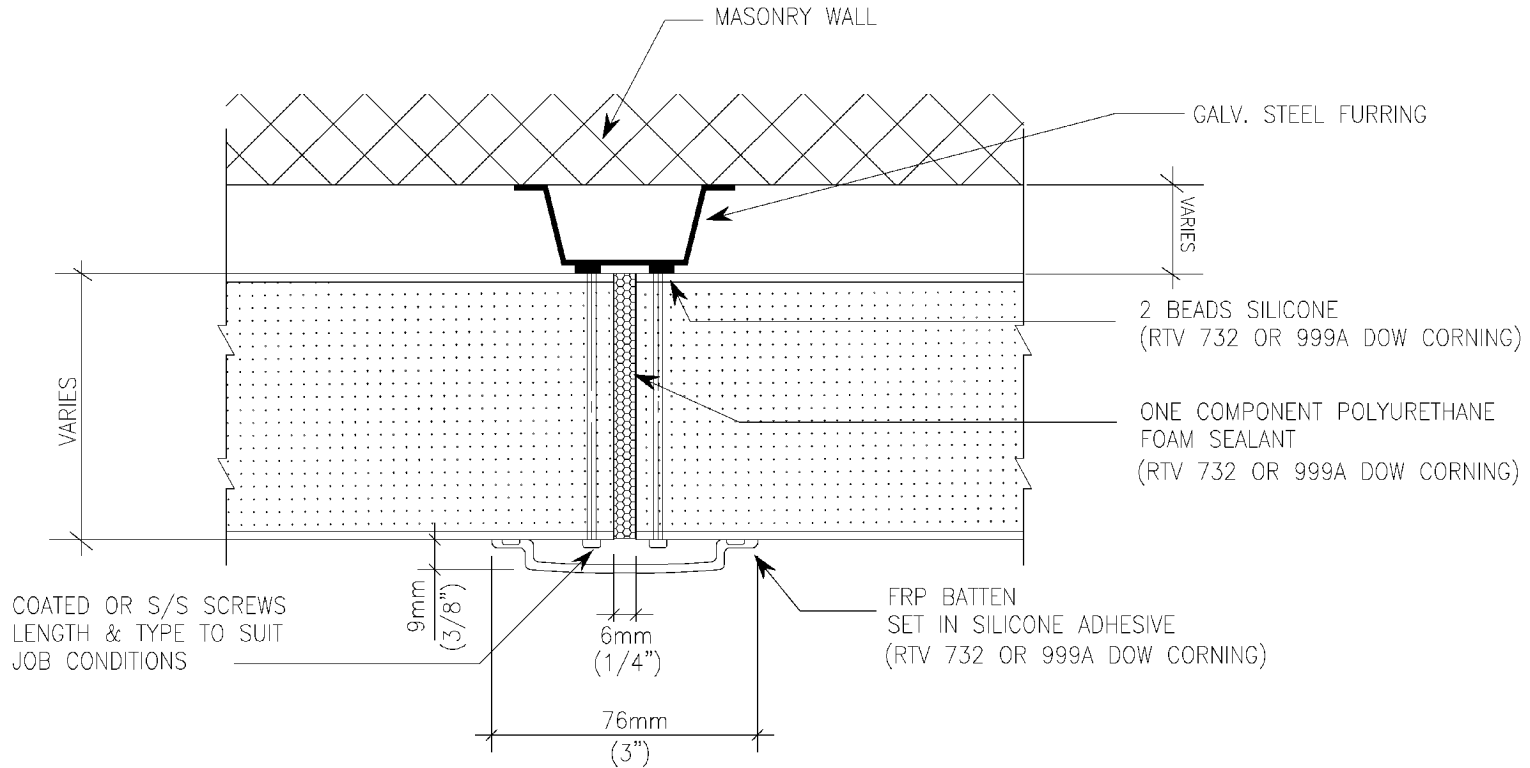
RECOMMENDED PANEL DIMENSIONS

- MIN. 8'x 8'
- MAX. 10'x 50'

NOTES:

SURFACE OPTIONS:

- * GEL COATED
- * NON-GEL COATED FRP - CLASS A & CLASS C SURFACES AVAILABLE.



YIELD	DWG #	F				DATE:	2-11-02
	C&WL-15	E				SCALE:	N.T.S.
		D				DRAWN:	JGB
		C				CHECKED:	G.B.
		A					
	NO.	DATE	E.C.N.	REVISIONS			

arcoplast

WALL AND CEILING SYSTEMS

858 WOODCOVE COURT
CHESTERFIELD, MO 63017
888-736-2726
FAX 314-530-9949

INSULATED CEILING OR WALL LINER PANEL
TYPICAL JOINT (FURRING SUPPORT)

ARCOPLAST CEILING/WALL LINER PANEL

CORE OPTIONS:

- * POLYISOCYANURATE FOAM 5/8" TO 6"
- * EXPANDED POLYSTYRENE FOAM 5/8" TO 6"

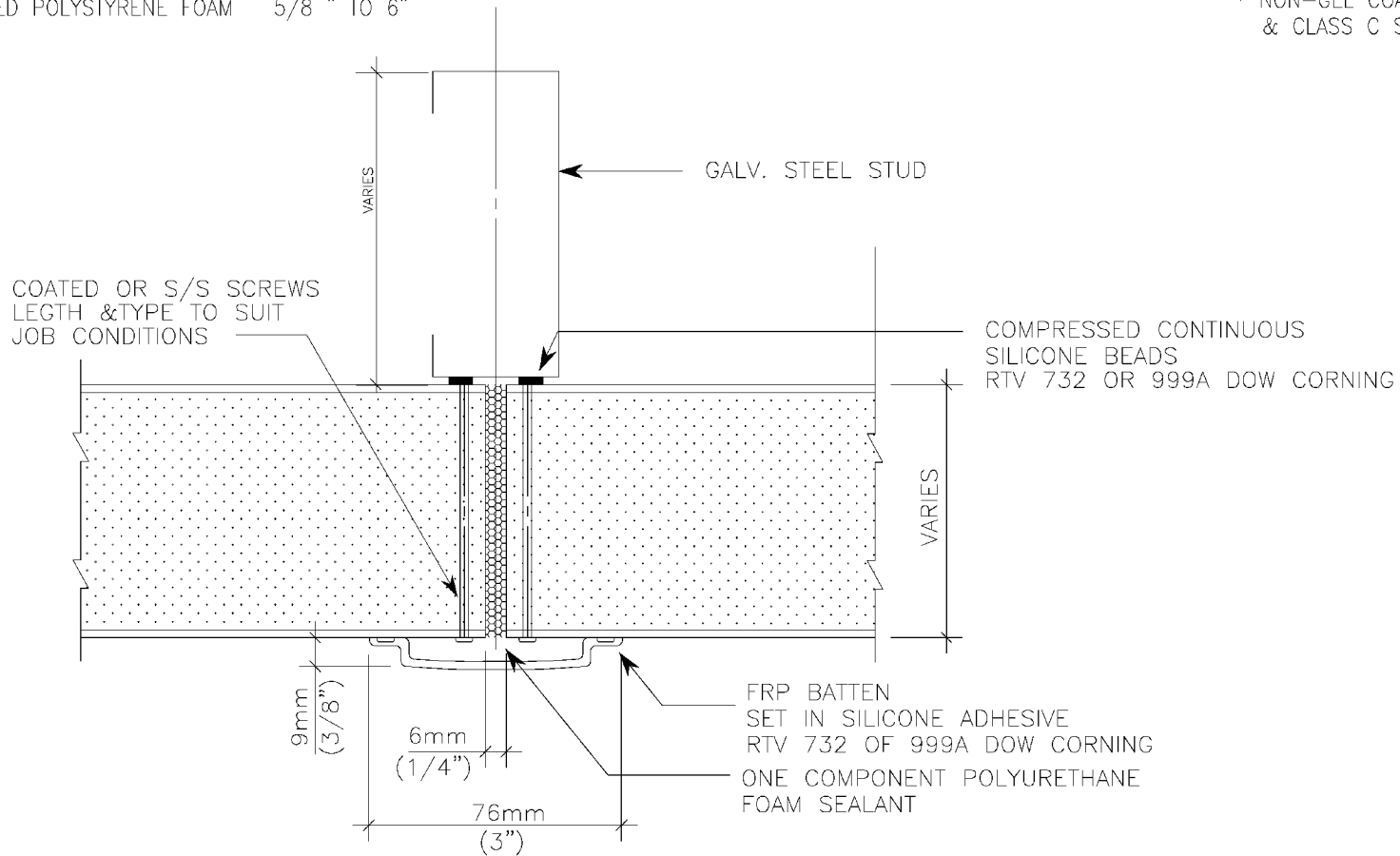
RECOMMENDED PANEL DIMENSIONS

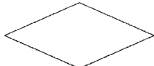
- MIN. 8'x 8'
- MAX. 10'x 50'

NOTE:

SURFACE OPTIONS:

- * GEL COATED
- * NON-GEL COATED FRP - CLASS A & CLASS C SURFACES AVAILABLE.



YIELD	DWG #	F			DATE:	 arcoplast WALL AND CEILING SYSTEMS	858 WOODCOVE COURT CHESTERFIELD, MO 63017 888-736-2726 FAX 314-530-9949
	C&WL-16	E			2-11-02		
		D			SCALE:		
		C			N.T.S.		
		B			DRAWN:		
	A			JGB	INSULATED CEILING OR WALL LINER PANEL TYPICAL JOINT (STUD SUPPORT)		
	NO.	DATE	E.C.N.	REVISIONS			
					CHECKED:		
					G.B.		

ARCOPLAST WALL LINER PANEL
 FLUSH JOINT SYSTEM
 CORE OPTIONS THICKNESS OPTIONS

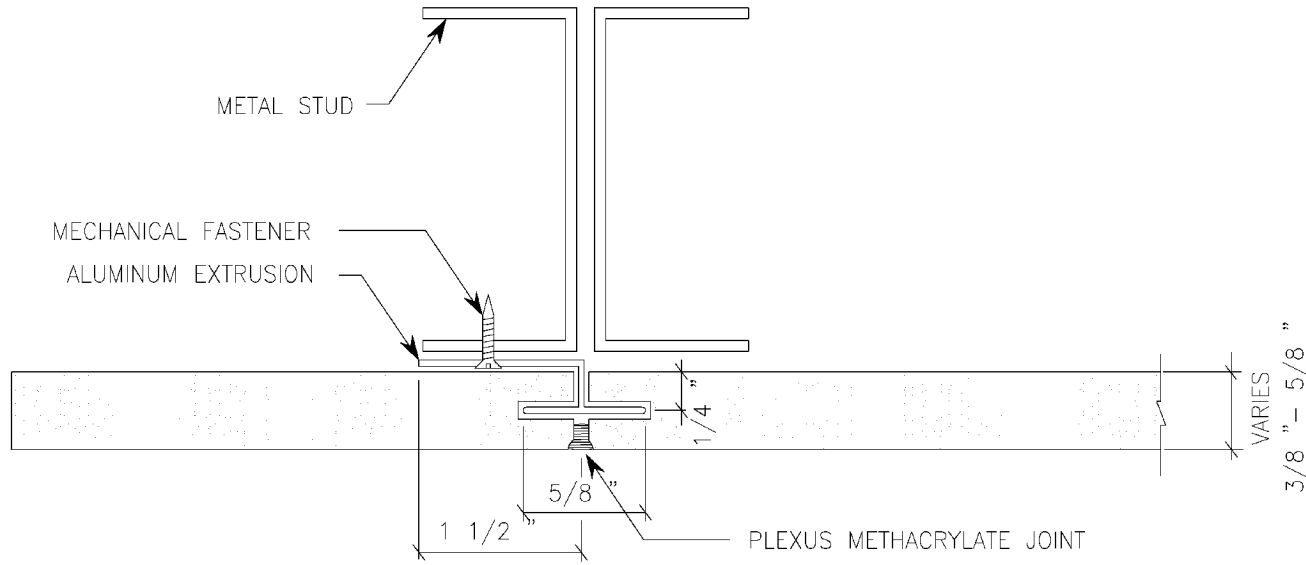
- PLYWOOD 3/8" - 1"
- SOLID CORE 6mm
- CEMENT 6mm

RECOMMENDED PANEL DIMENSIONS

MIN. 4'x 8'
 MAX. 8'x 24'

NOTES:

- SURFACE OPTIONS:
- * GEL COATED
 - * NON-GEL COATED FRP - CLASS A & CLASS C SURFACES AVAILABLE.



ARCOPLAST MOLDING JOINT
 SPLINE .060 THICKNESS

YIELD	DWG #	F			DATE:		858 WOODCOVE COURT CHESTERFIELD, MO 63017 888-736-2726 FAX 314-530-9949
	C&WL-17	E			2-11-02		
		D			SCALE:		
		C			N.T.S.		
		B			DRAWN:		
	A			JGB	CEILING AND WALL LINER FLUSH JOINT (STUD SUPPORT)		
	NO.	DATE	E.C.N.	REVISIONS			
					CHECKED:		
					G.B.		

ARCOPLAST WALL LINER PANEL
 FLUSH JOINT SYSTEM
 CORE OPTIONS THICKNESS OPTIONS

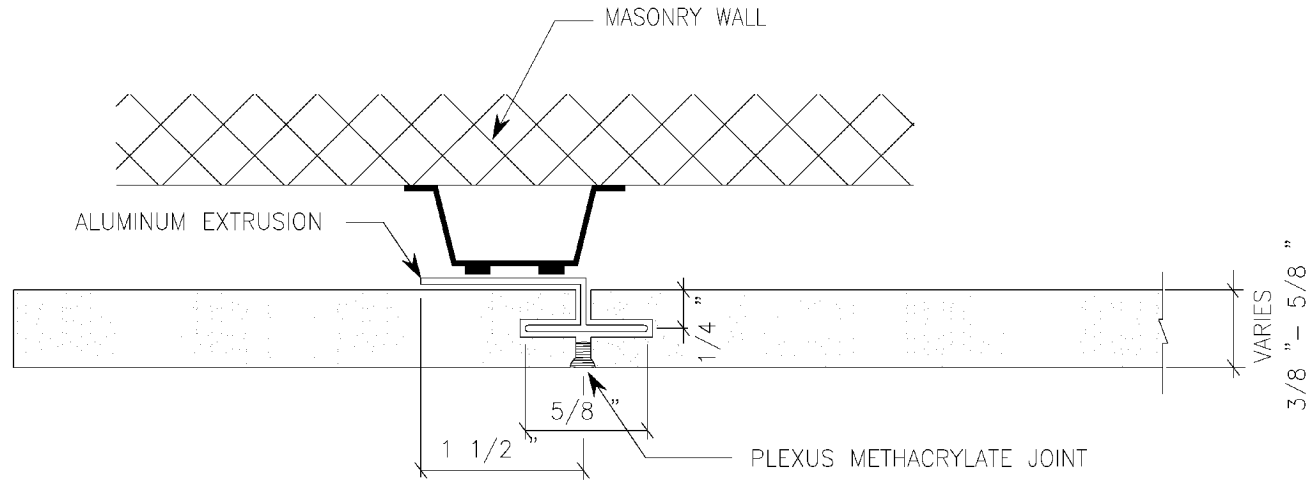
- PLYWOOD 3/8" - 1"
- SOLID CORE 6mm
- CEMENT 6mm

RECOMMENDED PANEL DIMENSIONS


MIN. 4' x 8'
 MAX. 8' x 24'

NOTES:

- SURFACE OPTIONS:
- * GEL COATED
 - * NON-GEL COATED FRP - CLASS A & CLASS C SURFACES AVAILABLE.



ARCOPLAST MOLDING JOINT
 — T — SPLINE .060 THICKNESS

YIELD	DWG #	F			DATE:		858 WOODCOVE COURT CHESTERFIELD, MO 63017 888-736-2726 FAX 314-530-9949
	C&WL-18	E			2-11-02		
		D			SCALE:		
		C			N.T.S.		
		B			DRAWN:		
	A			JGB	CEILING AND WALL LINER FLUSH JOINT (FURRING SUPPORT)		
	NO.	DATE	E.C.N.	REVISIONS			
					CHECKED:		
					G.B.		

ARCOPLAST WALL LINER PANEL
 FLUSH JOINT SYSTEM
 CORE OPTIONS THICKNESS OPTIONS

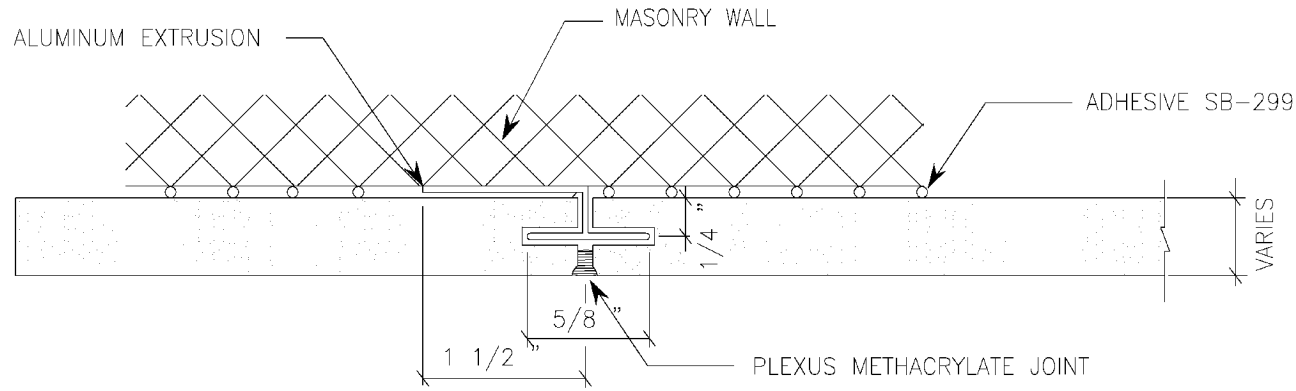
- PLYWOOD 3/8" - 1"
- SOLID CORE 6mm
- CEMENT 6mm

RECOMMENDED PANEL DIMENSIONS

MIN. 4'x 8'
 MAX. 8'x 24'

NOTES:

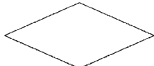
- SURFACE OPTIONS:
- * GEL COATED
 - * NON-GEL COATED FRP - CLASS A & CLASS C SURFACES AVAILABLE.



ARCOPLAST MOLDING JOINT
 SPLINE .060 THICKNESS

YIELD	DWG #	F			
	C&WL-19	E			
		D			
		C			
		B			
	A				
	NO.	DATE	E.C.N.	REVISIONS	

DATE:	2-11-02
SCALE:	N.T.S.
DRAWN:	JGB
CHECKED:	G.B.



arcoplast
 WALL AND CEILING SYSTEMS

858 WOODCOVE COURT
 CHESTERFIELD, MO 63017
 888-736-2726
 FAX 314-530-9949

CEILING AND WALL LINER FLUSH JOINT
 (FURRING SUPPORT)